

DATASHEET

Version: 2016-08-17

Amyloid Precursor Protein Antibody (653-662), pAb, Rabbit**Cat. No.:** A00694-40**Size:** 40 µg**Synonyms:** Rabbit Anti-Amyloid Precursor Protein (653-662) pAb; Anti-APP**Description:**

Amyloid precursor protein (APP) is a type I integral membrane protein with a large N-terminal extracellular domain, a single transmembrane domain, and a short cytoplasmic tail. APP is found in three main isoforms, APP695, APP751, and APP770. APP can be sequentially cleaved by beta-secretase and gamma-secretase to release beta-amyloid, which is the main component of senile plaque the brains of patients afflicted with Alzheimers disease.

GenScript Rabbit Anti-APP (653-662) Polyclonal Antibody is developed in rabbit hosts using a synthetic peptide, RPGSGLTNIK, corresponding to C terminal amino acids 653-662 of human APP. GenScript Rabbit Anti-APP (653-662) Polyclonal Antibody is a valuable tool for scientists and neuropathologists who study the role of APP in Alzheimer's disease.

GenScript Rabbit Anti-APP (653-662) Polyclonal Antibody is highly purified from rabbit antiserum by immunoaffinity chromatography.

Immunogen: Synthetic peptide RPGSGLTNIK conjugated to KLH

Host: Rabbit

Antigen Synonyms: Human

Conjugation: Unconjugated

Formulation:

0.5 mg/ml in PBS, pH 7.4, containing 30% glycerol, and 0.02%

sodium azide

Ig Subclass: Rabbit IgG

Specificity: GenScript Rabbit Anti-APP (653-662) Polyclonal Antibody can detect both human recombinant APP and endogenous APP from cell lysates and tissue slides and mouse APP in brain tissue lysate.

Purification: Immunoaffinity chromatography

Applications:

Working concentrations for specific applications should be determined by the investigator. Appropriate concentrations will be affected by several factors, including secondary antibody affinity, antigen concentration, sensitivity of detection method, temperature, and length of incubations, etc. The suitability of this antibody for applications other than those listed below has not been determined. The following concentration ranges are recommended starting points for this product.

ELISA: 0.05-0.2 µg/ml

Western blot: 0.1-1.0 µg/ml

Immunofluorescence: 5-20 µg/ml

Western Blot Using the ONE-HOUR Western™ Kit: For quick results, we recommend the GenScript ONE-HOUR Western™ Complete Kit (Rabbit) (L00204C). Mix 10 µg of this antibody with 10 ml of WB solution for an 8 cm X 8 cm membrane.

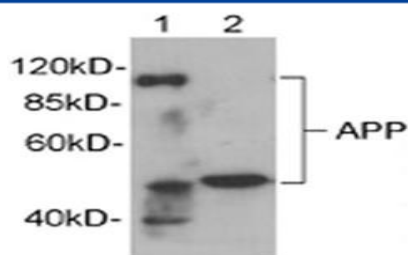
Other applications: user-optimized

Species Reactivity: Human, mouse

Storage:

The antibody is stable for 2-3 weeks if stored at 2-8°C. For long term storage, aliquot and store at -20°C or below. Avoid repeated freezing and thawing cycles.

Example



Lane 1: Mouse brain tissue lysate

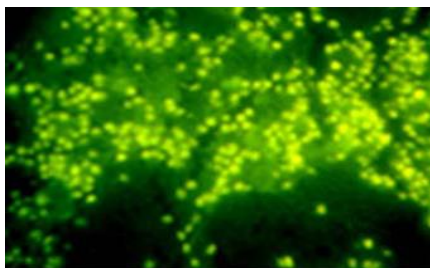
Lane 2: HEK-293 cell lysate

Primary Antibody: 1µg/ml Rabbit Anti-APP (653-662) Polyclonal Antibody (GenScript, A00694)

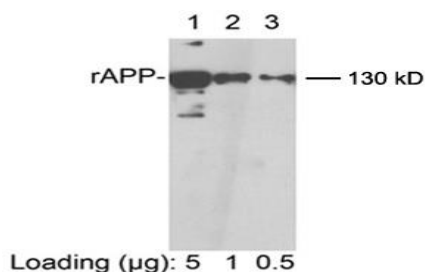
Secondary Antibody: Goat Anti-Rabbit IgG (H&L) [HRP]

Polyclonal Antibody (GenScript, A00098, 1:5,000)

The signal was developed with LumiSensor™ HRP Substrate Kit (GenScript, L00221V500)



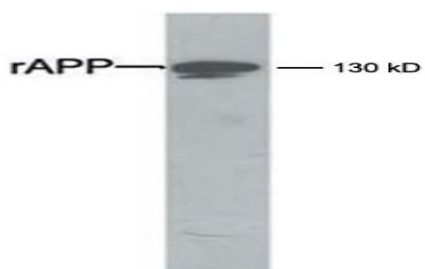
Immunofluorescent analysis of human brain tissue slide using Rabbit Anti-APP (653-662) Polyclonal Antibody (GenScript, A00694)



Loading: Recombinant human APP expressed in *E. coli* cell lysate

Primary Antibody: 1µg/ml Rabbit Anti-APP (653-662) Polyclonal Antibody (GenScript, A00694)

The signal was developed with LumiSensor™ HRP Substrate Kit (GenScript, L00221V500)



Loading: Recombinant human APP expressed in *E. coli* cell lysate

Primary Antibody: Rabbit Anti-APP (653-662) Polyclonal Antibody (GenScript, A00694)

The result was developed with One-Step Western™ Complete Kit (Rabbit) (GenScript, L00204C)