

## Amyloid Precursor Protein Antibody (747-761), pAb, Rabbit

**Cat. No.:** A00696-40

**Size:** 40 µg

**Synonyms:** Rabbit Anti-Amyloid Precursor Protein pAb;

### Description:

Amyloid precursor protein (APP) is a type I integral membrane protein with a large N-terminal extracellular domain, a single transmembrane domain, and a short cytoplasmic tail. APP is found as three main isoforms, APP695, APP751 and APP770. APP can be sequentially cleaved by beta-secretase and gamma-secretase to release beta-amyloid, which is the main component of senile plaque in patient brains inflicted with Alzheimers disease.

GenScript **Rabbit Anti-APP (747-761) Polyclonal Antibody** is developed in rabbit using a synthetic peptide, RHLSKMQQNGYENPT, corresponding to the C term amino acids 747-761 of human APP. GenScript Rabbit anti APP (747-761) Polyclonal Antibody should be a valuable tool for scientists and neuropathologists who study the role of APP in Alzheimer's disease.

Rabbit Anti-APP (747-761) Polyclonal Antibody is highly purified from rabbit antiserum by immunoaffinity chromatography and is supplied as a 40 µg aliquot at a concentration of 0.5 mg/ml.

**Immunogen:** Synthetic peptide, RHLSKMQQNGYENPT, corresponding to the C term amino acids 747-761 of human APP, conjugated to KLH.

**Host:** Rabbit

**Antigen Synonyms:** Human

**Conjugation:** Unconjugated

### Formulation:

0.5 mg/ml in PBS, pH 7.4, containing 30% glycerol and 0.02% sodium azide

**Ig Subclass:** Rabbit IgG

**Specificity:** GenScript Rabbit Anti-APP (747-761) Polyclonal Antibody is specific to human APP.

**Purification:** Immunoaffinity chromatography

### Applications:

Working concentrations for specific applications should be determined by the investigator. Appropriate concentrations will be affected by several factors, including secondary antibody affinity, antigen concentration, sensitivity of detection method, temperature, and length of incubations, etc. The suitability of this antibody for applications other than those listed below has not been determined. The following concentration ranges are recommended starting points for this product.

**ELISA:** 0.05-0.2 µg/ml

**Western blot:** 0.1-1.0 µg/ml

**Western Blot Using ONE-HOUR Western™ Kit:** For quick results, GenScript ONE-HOUR Western™ Kit L00204C is recommended. 10 µg of this antibody is mixed with 10 ml of WB solution for 8 cm X 8 cm membrane.

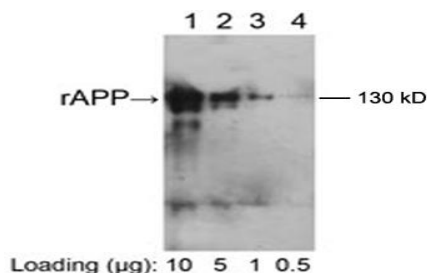
**Other applications:** user-optimized

**Species Reactivity:** Human, mouse

### Storage:

The antibody is stable for 2-3 weeks if stored at 2-8°C. For long term storage, aliquot and store at -20°C or below. Avoid repeated freezing and thawing cycles.

### Example

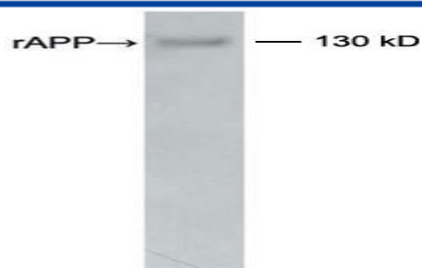


Loading: Recombinant human APP expressed in *E. coli* cell lysate

Primary Antibody: 1µg/ml Rabbit Anti-APP (747-761) Polyclonal Antibody (GenScript, A00696)

Secondary Antibody: Goat Anti-Rabbit IgG (H&L) [HRP] Polyclonal Antibody (GenScript, A00098, 1:5,000)

The signal was developed with LumiSensor™ HRP Substrate Kit (GenScript, L00221V500)



Loading: Recombinant human APP expressed in *E. coli* cell lysate

Primary Antibody: Rabbit Anti-APP (747-761) Polyclonal Antibody (GenScript, A00696)

The result was developed with One-Step Western™ Complete Kit (Rabbit) (GenScript, L00204C)