

DATASHEET

Version: 2016-08-17

Serum Amyloid P Antibody, pAb, Rabbit

Cat. No.: A00701-40

Size: 40 µg

Synonyms: Rabbit Anti-Serum Amyloid P pAb;

Description:

Serum amyloid P component (SAP) is a non-fibrillar plasma glycoprotein that belongs to the pentraxin family. It is universally found in amyloid deposits (such as senile plaque and neurofibrillary tangles in Alzheimers patients), and this is probably due to its specific calcium-dependent binding to motifs, which are present on all types of amyloid fibrils. SAP is also found to prevent fibrillar breakdown by enzymes and it is believed that it helps maintains stability of the amyloid deposits. It has been shown that SAP binds monocytes with high avidity, but does not bind to erythrocytes, NK cells, T-lymphocytes, or B-lymphocytes. SAP production can be induced by exposure to IL-1, IL-6, and IFN-beta. SAP levels in CSF can be useful for assessing cognitive impairment in AD patients.

GenScript **Rabbit Anti-Serum Amyloid P Polyclonal**

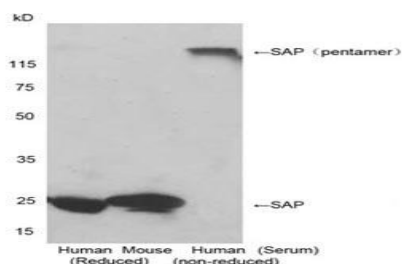
Antibody is developed in rabbit using a synthetic peptide corresponding to residues near the N-terminus of human serum amyloid P-component conjugated to KLH.

Immunogen: A synthetic peptide corresponding to residues near the N-terminus of human serum amyloid P-component conjugated to KLH

Host: Rabbit

Antigen Synonyms: Human

Example



Conjugation: Unconjugated

Formulation:

1 mg/ml in PBS, pH7.4, containing 0.02% sodium azide

Ig Subclass: Rabbit IgG

Specificity: GenScript Rabbit Anti-Serum Amyloid P Polyclonal Antibody is specific to human and mouse serum amyloid P component. It has not yet been tested in other species.

Purification: Immunoaffinity chromatography

Applications:

Working concentrations for specific applications should be determined by the investigator. Appropriate concentrations will be affected by several factors, including secondary antibody affinity, antigen concentration, sensitivity of detection method, temperature, and length of incubations, etc. The suitability of this antibody for applications other than those listed below has not been determined. The following concentration ranges are recommended starting points for this product.

ELISA: 0.05-0.2 µg/ml

Western blot: 0.1-1.0 µg/ml

Other applications: user-optimized

Storage:

The antibody is stable for 2-3 weeks if stored at 2-8°C. For long term storage, aliquot and store at -20°C or below. Avoid repeated freezing and thawing cycles.

Western blot analysis of human and mouse serum using 1 µg/ml Rabbit Anti-Serum Amyloid P Polyclonal Antibody (GenScript, A00701)

Secondary antibody: Goat Anti-Rabbit IgG (H&L) [HRP] Polyclonal Antibody (GenScript, A00098, 1:20,000)

The signal was developed with LumiSensor™ HRP Substrate Kit (GenScript, L00221V500)