

DATASHEET

Version: 2016-08-17

Chk1 Antibody (Phospho-Ser²⁹⁶), pAb, Rabbit

Cat. No.: A00727-40

Size: 40 µg

Synonyms: Rabbit Anti-Chk1 (Phospho-Ser²⁹⁶) pAb;

Description:

Chk1 is a serine/threonine kinase that was first identified as a checkpoint kinase in *Schizosaccharomyces pombe*. Chk1 is an evolutionarily conserved protein kinase that functions to ensure genomic integrity upon genotoxic stress. Chk1 activated through phosphorylation by ATR/ATM and plays an important role in DNA damage checkpoint control, embryonic development, and tumor suppression. The activation of Chk1 in response to blocking DNA replication and certain forms of genotoxic stress involves phosphorylation of Ser 317 and Ser 345. Chk1 is also phosphorylated at Ser 280 and Ser 296 following DNA damage. Activated Chk1 phosphorylates downstream factors that mediate cell cycle arrest and other physiological events in the cell, these key cell cycle factors include p53, Cdc25C, etc.

GenScript **Rabbit Anti-Chk1 (Phospho-Ser²⁹⁶) Polyclonal Antibody** is developed in rabbit using a synthetic phosphopeptide (KLH-coupled) corresponding to residues surrounding Ser 296 of human Chk1.

Immunogen: Synthetic phospho-peptide (KLH-coupled) corresponding to residues surrounding Ser296 of human Chk1.

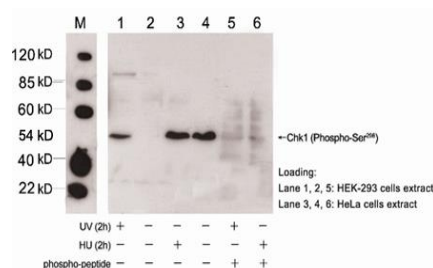
Host: Rabbit

Antigen Synonyms: Human

Conjugation: Unconjugated

Formulation:

Example



0.5 mg/ml in PBS, pH 7.4, containing 30% glycerol, and 0.02% sodium azide

Ig Subclass: Rabbit IgG

Specificity: GenScript Rabbit Anti-Chk1 (Phospho-Ser²⁹⁶) Polyclonal Antibody detects endogenous levels of Chk1 only when phosphorylated at serine 296.

Purification: GenScript Rabbit Anti-Chk1 (Phospho-Ser²⁹⁶) Polyclonal Antibody is affinity-purified from rabbit antiserum by affinity chromatography using epitope-specific phosphopeptide and cross-adsorbed with the corresponding non-phosphopeptide.

Applications:

Working concentrations for specific applications should be determined by the investigator. Appropriate concentrations will be affected by several factors, including secondary antibody affinity, antigen concentration, sensitivity of detection method, temperature, and length of incubations, etc. The suitability of this antibody for applications other than those listed below has not been determined. The following concentration ranges are recommended starting points for this product.

ELISA: 0.05-0.2 µg/ml

Western blot: 0.5-2.0 µg/ml

Other applications: user-optimized

Species Reactivity: Human, mouse

Storage:

The antibody is stable for 2-3 weeks if stored at 2-8°C. For long term storage, aliquot and store at -20°C or below. Avoid repeated freezing and thawing cycles.

Western blot analysis of extracts from HEK-293 and HeLa cells treated with UV or hydroxyurea (HU) as indicated using Rabbit Anti-Chk1 (Phospho-Ser²⁹⁶) Polyclonal Antibody (GenScript, A00727)

