

DATASHEET

Version: 2016-08-17

PON2 Antibody, pAb, Rabbit

Cat. No.: A00816-40

Size: 40 µg

Synonyms: Rabbit Anti PON2 pAb;

Description:

PON2 (serum arylalkylphosphatase2, aromatic esterase2) is one member of the PONs family of molecules, which includes PON1, PON2, and PON3. PON2 demonstrates the highest AHL hydrolyzation activity of the three. PON2 is widely expressed in a number of tissues and cell types, and it is implicated in a number of diseases, including Alzheimers disease, type two diabetes mellitus.

GenScript **Rabbit Anti-PON2 Polyclonal Antibody** is produced by the immunization of a synthetic peptide derived from mouse PON2 and highly purified from rabbit antiserum by peptide affinity chromatography. GenScript Rabbit Anti-PON2 Polyclonal Antibody is supplied as a 40 µl aliquot at concentration of 1 mg/ml in PBS, pH 7.4, containing 0.02% sodium azide.

Immunogen: Epitope peptide GQRLFVYHPNHPPAC conjugated to KLH

Host: Rabbit

Antigen Synonyms: Human

Conjugation: Unconjugated

Formulation:

0.5 mg/ml in PBS, pH 7.4, containing 0.02% sodium azide

Ig Subclass: Rabbit IgG

Specificity: GenScript Rabbit Anti-PON2 Polyclonal Antibody reacts with mouse PON2. It has not yet been tested with other species.

Purification: Immunoaffinity chromatography

Applications:

Working concentrations for specific applications should be determined by the investigator. The appropriate concentrations may be affected by secondary antibody affinity, antigen concentration, the sensitivity of the method of detection, temperature, the length of the incubations, and other factors. The suitability of this antibody for applications other than those listed below has not been determined. The following concentration ranges are recommended starting points for this product.

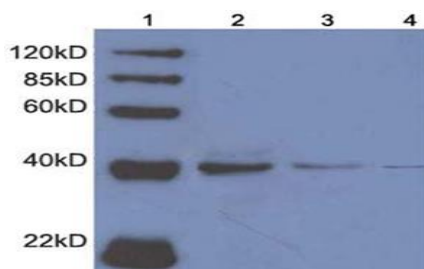
Western blot: 0.5-2 µg/ml

Other applications: user-optimized

Storage:

The antibody is stable for 2-3 weeks if stored at 2-8°C. For long term storage, aliquot and store at -20°C or below. Avoid repeated freezing and thawing cycles.

Example



Lane 1: Marker

Lane 2: 50 µg Mouse brain tissue lysate

Primary antibody: 4 µg/ml Rabbit Anti-PON2 Polyclonal Antibody (GenScript, A00816)

Lane 3: 50 µg Mouse brain tissue lysate

Primary antibody: 2 µg/ml Rabbit Anti-PON2 Polyclonal Antibody (GenScript, A00816)

Lane 4: 50 µg Mouse brain tissue lysate

Primary antibody: 1 µg/ml Rabbit Anti-PON2 Polyclonal Antibody (GenScript, A00816)

Secondary antibody: Goat Anti-Rabbit IgG (H&L) [HRP]

Polyclonal Antibody (GenScript, A00098, 1:10,000)