

DATASHEET

Version: 2016-08-17

PKC γ Antibody, pAb, Rabbit**Cat. No.:** A00904-40**Size:** 40 μ g**Synonyms:** Rabbit Anti-PKC γ pAb;**Description:**

Protein kinase C (PKC, EC 2.7.11.13) is a cyclic nucleotide-independent enzyme that phosphorylates serine and threonine residues in many target proteins. It is involved in diverse cellular signaling pathways. Specifically, PKC family members serve as major receptors for phorbol esters, a class of tumor promoters. Each member of the PKC family has a specific expression profile and is believed to play a distinct role in cells. PKC family is divided into three groups based on different enzymes cofactor requirements. They are conventional (c) PKC isoforms, novel (n) PKC isoforms, and atypical (a)PKC isoforms respectively. Conventional (c) PKC isoforms consisting α , β I, β II and γ require diacylglycerol (DAG), Ca^{2+} , and phospholipid for activation. Novel (n)PKC isoforms consisting δ , ϵ , η (also known as PKC-L), θ and μ (the mouse homolog of human PKC μ , known as PKD) require DAG but not Ca^{2+} for activation. Atypical (a)PKC isoforms, consisting ζ , ι and λ (the mouse homolog of human PKC ι) require neither Ca^{2+} nor DAG. Other than those listed above, a new PKC member has recently been discovered and is referred to as PKCv. PKC γ (PKC gamma) plays a key role in neuronal signal transduction and regulating intercellular communication. GenScript **Rabbit Anti-PKC γ Polyclonal Antibody** is developed in rabbit using a synthetic peptide (KLH-coupled) derived from human PKC γ .

Immunogen: Synthetic peptide (KLH-coupled) derived from human PKC γ **Host:** Rabbit**Example****Antigen Synonyms:** Human**Conjugation:** Unconjugated**Formulation:**

0.5 mg/ml, lyophilized with PBS, pH 7.4, containing 0.02% sodium azide

Ig Subclass: Rabbit IgG**Specificity:** GenScript Rabbit Anti-PKC γ Polyclonal Antibody detects all endogenous human and mouse PKC γ protein. No cross-reactivity to other PKC isoforms is detected.**Purification:** Immunoaffinity chromatography**Applications:**

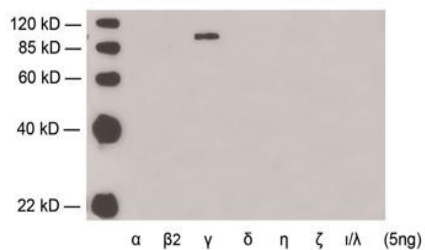
Working concentrations for specific applications should be determined by the investigator. The appropriate concentrations may depend on secondary antibody affinity, antigen concentration, detection method sensitivity, temperature, incubation length, and many other factors. The suitability of this antibody for applications other than those listed below has not been determined. The following concentration ranges are starting recommendations for this product.

Western blot: 0.5-2 μ g/ml**Other applications:** user-optimized**Reconstitution:**

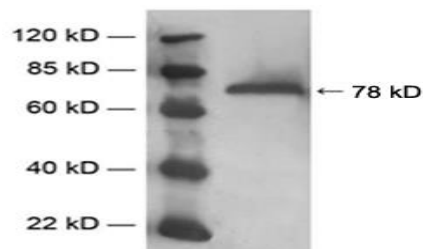
Reconstitute the lyophilized powder with deionized water (or equivalent) to an final concentration of 0.5 mg/ml.

Storage:

The antibody is stable in lyophilized form if stored at -20°C or below. The reconstituted antibody can be stored for 2-3 weeks at $2-8^{\circ}\text{C}$. For long term storage, aliquot and store at -20°C or below. Avoid repeated freezing and thawing cycles.



Western blot analysis of recombinant protein of PKC isoforms using Rabbit Anti-PKCγ Polyclonal Antibody (GenScript, A00904) demonstrating the isoform-specificity of this antibody.



Western blot analysis of mouse brain tissue lysate using Rabbit Anti-PKCγ Polyclonal Antibody (GenScript, A00904)