

DATASHEET

Version: 2016-08-17

GAPDH Antibody [Biotin], pAb, Goat

Cat. No.: A00915-40

Size: 40 µg

Synonyms: Anti-GAPDH [Biotin];

Description:

Glyceraldehyde-3-phosphate dehydrogenase (GAPDH) is one of the key enzymes involved in glycolysis. Though expressed differently in different tissues, GAPDH is thought to be a constitutively expressed housekeeping protein. For this reason, GAPDH is often measured as a control in experiments quantifying specific changes in expression of other targets. Recent evidence suggests that mammalian GAPDH is also involved in a great number of intracellular processes such as membrane fusion, microtubule bundling, phosphotransferase activity, nuclear RNA export, DNA replication, and DNA repair. GAPDH may also play a role in neurodegenerative pathologies such as Huntingtons and Alzheimers disease. Some physiological factors, such as hypoxia and diabetes, increase GAPDH expression in certain cell types.

GenScript **Goat Anti-GAPDH [Biotin] Polyclonal Antibody** is highly purified from goat antiserum by immunoaffinity chromatography and then conjugated to biotin.

Immunogen: Glyceraldehyde-3-phosphate dehydrogenase (GAPDH) from rabbit muscle

Host: Goat

Conjugation: Biotin Conjugated

Formulation:

0.5 mg/ml in PBS, pH 7.4, containing 30% glycerol and 0.02% sodium azide

Specificity: GenScript Goat Anti-GAPDH [Biotin] Polyclonal Antibody specifically reacts with GAPDH from human, mouse, rat, goat, rabbit, chicken, hamster, bovine, swine, fish, and *E. coli* cell or tissue lysates. It has not yet been tested for other species.

Applications:

Working concentrations for specific applications should be determined by the investigator. Appropriate concentrations will be affected by several factors, including secondary antibody affinity, antigen concentration, sensitivity of detection method, temperature, and length of incubations, etc. The suitability of this antibody for applications other than those listed below has not been determined. The following concentration ranges are recommended starting points for this product.

Western blot: 0.1-1.0 µg/ml

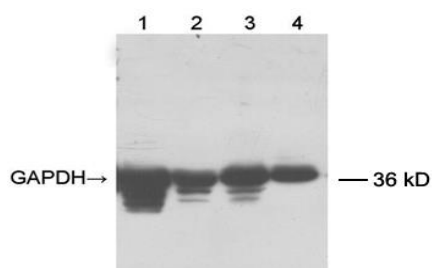
Other applications: user-optimized

Species Reactivity: Human, mouse, rat, goat, rabbit, chicken, hamster, bovine, swine, fish, and *E. coli*

Storage:

The antibody is stable for 2-3 weeks if stored at 2-8°C. For long term storage, aliquot and store at -20°C or below. Avoid repeated freezing and thawing cycles.

Example



Lane 1: 20 µg fish muscle tissue lysate

Lane 2: 12 µg chicken muscle tissue lysate

Lane 3: 20 µg mouse brain tissue lysate

Lane 4: 32 µg HEK-293 cell lysate

Primary antibody: 0.5 µg/ml Goat Anti-GAPDH [Biotin] Polyclonal Antibody (GenScript, A00915)

Secondary reagent: 0.1 µg/ml Streptavidin-HRP (GenScript, M00091)

The signal was developed with LumiSensor™ HRP Substrate Kit (GenScript, L00221V500)