

DATASHEET

Version: 2016-08-17

V-ATPase Subunit B 2 Antibody, pAb, Rabbit

Cat. No.: A00960-40

Size: 40 µg

Synonyms: Rabbit Anti-V-ATPase Subunit B 2 pAb;

Description:

The V-ATPase subunit B 2 is related to a gene that encodes a component of vacuolar ATPase (V-ATPase), a multisubunit enzyme that mediates acidification of eukaryotic intracellular organelles. V-ATPase dependent organelle acidification is necessary for such intracellular processes as protein sorting, zymogen activation, receptor-mediated endocytosis, and synaptic vesicle proton gradient generation. V-ATPase is composed of a cytosolic V1 domain and a transmembrane V0 domain. The V1 domain consists of three A, three B, and two G subunits, as well as a C, D, E, F, and H subunits. The V1 domain contains the ATP catalytic site. The protein encoded by this gene is one of two V1 domain B subunit isoforms and is the only B isoform highly expressed in osteoclasts.

GenScript **Rabbit Anti-V-ATPase Subunit B 2 Polyclonal Antibody** is developed in rabbit using a synthetic peptide conjugated to KLH.

Immunogen: Synthetic peptide (KLH-coupled) within residues 300-350 of human V-ATPase Subunit B2 protein (Swiss Prot: P21281)

Host: Rabbit

Antigen Synonyms: Human

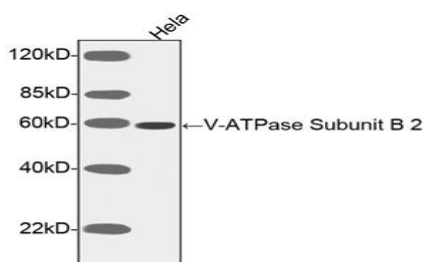
Conjugation: Unconjugated

Predicated Band Size:

56 kD

Observed Band Size:

Example



58 kD

Formulation:

0.5 mg/ml in PBS, pH 7.4, containing 30% glycerol and 0.02% sodium azide

Ig Subclass: Rabbit IgG

Specificity: GenScript Rabbit Anti-V-ATPase Subunit B 2 Polyclonal Antibody reacts with human Anti-V-ATPase subunit B. Sequence homology predicts that it will also react with mouse, rat, chicken, bovine, and fruit fly V-ATPase subunit B 2.

Purification: Immunoaffinity chromatography

Applications:

Working concentrations for specific applications should be determined by the investigator. The appropriate concentrations may be affected by secondary antibody affinity, antigen concentration, the sensitivity of the method of detection, temperature, the length of the incubations, and other factors. The suitability of this antibody for applications other than those listed below has not been determined. The following concentration ranges are recommended starting points for this product.

ELISA: 0.03-0.125 µg/ml

Western blot: 1.0 µg/ml

Other applications: user-optimized

Storage:

The antibody is stable for 2-3 weeks if stored at 2-8°C. For long term storage, aliquot and store at -20°C or below. Avoid repeated freezing and thawing cycles.

Western blot analysis of cell lysates using V-ATPase Subunit B 2 Antibody, pAb, Rabbit (GenScript, A00960, 1 µg/ml). The signal was developed with Goat Anti-Rabbit IgG (H&L) [HRP] Polyclonal Antibody (GenScript, A00098) and LumiSensor™ HRP Substrate Kit (GenScript, L00221).
Predicted Size: 56 kD
Observed Size: 58 kD

