

DATASHEET

Version: 2016-08-17

WISP2 Antibody, mAb, Mouse**Cat. No.:** A01012-40**Size:** 40 µg**Synonyms:** Mouse Anti-WISP2 mAb; Wnt-1-inducible signaling pathway protein-2**Description:**

WISP-2 is a member of the connective tissue growth factor/cysteine-rich 61/nephroblastoma overexpressed (nov) (CCN) family and is upregulated in the mouse mammary epithelial cell line C57MG transformed by Wnt-1 and in several non-invasive human breast tumor cell lines. WISP-2 expression is enhanced by important modulators of human breast cancer cell proliferation such as estrogen, progesterone and epidermal growth factor (EGF) in MCF-7 cells. These effects, inhibited by appropriate antagonists, indicate that steroids and growth factor-induced upregulation of WISP-2 may be mediated through receptors. WISP2 gene may be downstream in the WNT1 signaling pathway that is relevant to malignant transformation. Its expression in colon tumors is reduced while the other two WISP members are overexpressed in colon tumors. It is expressed at high levels in bone tissue, and may play an important role in modulating bone turnover.

Immunogen: WISP2 full length recombinant protein with GST tag**Host:** Mouse**Antigen Synonyms:** Human**Conjugation:** Unconjugated**Fusion Partner:**

Spleen cells are fused with SP2/0-Ag14 mouse myeloma cells.

Predicated Band Size:

53 kD

Observed Band Size:**Example**

53 kD

Formulation:

1 mg/ml, lyophilized with PBS, pH 7.4, containing 0.02% sodium azide

Clone: 5D11E11**Ig Subclass:** Mouse IgG1**Purification:** Protein A affinity column**Applications:**

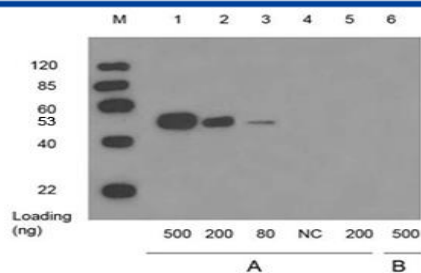
Working concentrations for specific applications should be determined by the investigator. The appropriate concentrations may be affected by secondary antibody affinity, antigen concentration, the sensitivity of the method of detection, temperature, the length of the incubations, and other factors. The suitability of this antibody for applications other than those listed below has not been determined. The following concentration ranges are recommended starting points for this product.

ELISA: 0.05-0.2 µg/ml**Western blot:** 0.1-1.0 µg/ml**Other applications:** user-optimized**Species Reactivity:** GenScript Mouse Anti-WISP2 reacts with human WISP2. It has not yet been tested with other species.**Reconstitution:**

Reconstitute the lyophilized powder with deionized water (or equivalent) to an final concentration of 1 mg/ml.

Storage:

The antibody is stable in lyophilized form if stored at -20°C or below. The reconstituted antibody can be stored for 2-3 weeks at 2-8°C. For long term storage, aliquot and store at -20°C or below. Avoid repeated freezing and thawing cycles.



Lane 1,2,3 and 6: WISP2 full length recombinant protein with GST tag in 293 cell lysate
 Lane 4: 10 µg 293 cell lysate
 Lane 5: GST protein

Primary antibody: A: 1 µg/ml Mouse Anti-WISP2 Monoclonal Antibody (GenScript, A01012)

B: Negative control

Secondary antibody: Goat Anti-Mouse IgG (H&L) [HRP] Polyclonal Antibody (GenScript, A00160, 1:10,000)

The signal was developed with LumiSensor™ HRP Substrate Kit (GenScript, L00221V500)