

DATASHEET

Version: 2016-08-17

Shc1 Antibody (Phospho-Tyr⁴²⁷), pAb, Rabbit

Cat. No.: A01035-100

Size: 100 µg

Synonyms: Rabbit Anti-Shc1 (Phospho-Tyr⁴²⁷) pAb;

Description:

none

Immunogen: Synthesized phosphopeptide derived from human Shc1 around the phosphorylation site of tyrosine 427 (P-S-Y^P-V-N)

Host: Rabbit

Antigen Synonyms: Human

Conjugation: Unconjugated

Predicated Band Size:

63 kD

Observed Band Size:

63 kD

Formulation:

1 mg/ml in phosphate buffered saline (without Mg²⁺ and Ca²⁺),

pH 7.4, 150 mM NaCl, 0.02% sodium azide, and 50% glycerol

Ig Subclass: Rabbit IgG

Specificity: GenScript Rabbit Anti-Shc1 (Phospho-Tyr⁴²⁷) Polyclonal Antibody detects endogenous levels of Shc1 only when phosphorylated at tyrosine 427.

Purification: GenScript Rabbit Anti-Shc1 (Phospho-Tyr⁴²⁷) Polyclonal Antibody is affinity-purified from rabbit antiserum by affinity chromatography using epitope-specific phosphopeptide. The antibody against non-phosphopeptide is removed by chromatography using non-phosphopeptide corresponding to the phosphorylation site.

Applications:

WB: 1:500-1:1,000

IHC: 1:50-1:100

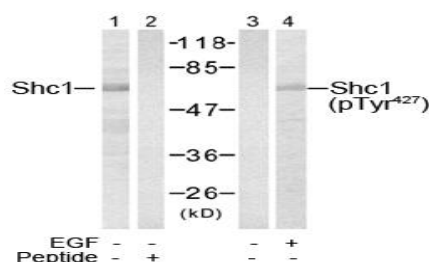
IF: 1:100-1:200

Species Reactivity: Human, mouse, rat

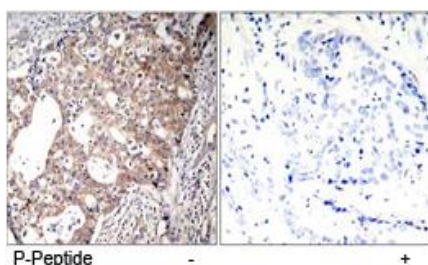
Storage:

Store Rabbit Anti-Shc1 (Phospho-Tyr⁴²⁷) Polyclonal Antibody at -20°C. It will remain stable for one year.

Example



Western blot analysis of extract from 293 cells, using Rabbit Anti-Shc1 (Ab-427) Polyclonal Antibody (GenScript, A00930, lane 1 and 2) and Rabbit Anti-Shc1 (Phospho-Tyr⁴²⁷) Polyclonal Antibody (GenScript, A01035, lane 3 and 4)



Immunohistochemical analysis of paraffin-embedded human breast carcinoma tissue, using Rabbit Anti-Shc1 (Phospho-Tyr⁴²⁷) Polyclonal Antibody (GenScript, A01035)