

DATASHEET

Version: 2016-08-17

IRS-1 Antibody (Ab-639), pAb, Rabbit

Cat. No.: A01042-100

Size: 100 µg

Synonyms: Rabbit Anti-IRS-1 (Ab-639) pAb;

Description:

none

Immunogen: Synthesized non-phosphopeptide derived from human IRS-1 around the phosphorylation site of serine 639 (P-K-S^P-V-S)

Host: Rabbit

Antigen Synonyms: Human

Conjugation: Unconjugated

Predicated Band Size:

180 kD

Observed Band Size:

180 kD

Formulation:

1 mg/ml in phosphate buffered saline (without Mg²⁺ and Ca²⁺), pH 7.4, 150 mM NaCl, 0.02% sodium azide, and 50% glycerol

Ig Subclass: Rabbit IgG

Specificity: GenScript Rabbit Anti-IRS-1 (Ab-639) Polyclonal Antibody detects endogenous levels of total IRS-1 protein.

Purification: GenScript Rabbit Anti-IRS-1 (Ab-639) Polyclonal Antibody is affinity-purified from rabbit antiserum by affinity chromatography using epitope-specific immunogen.

Applications:

WB: 1:500-1:1,000

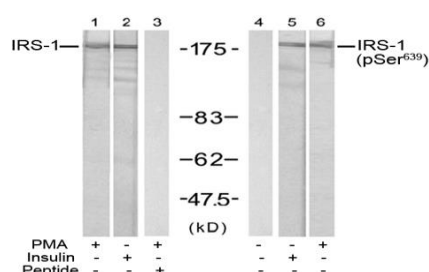
IF: 1:100-1:200

Species Reactivity: Human, mouse

Storage:

Store GenScript Rabbit Anti-IRS-1 (Ab-639) Polyclonal Antibody at -20°C. It will remain stable for one year.

Example



Western blot analysis of extract from 293 cells treated with PMA (0.2 µM, 15 min) or insulin (100 nM, 30 min) using Rabbit Anti-IRS-1 (Ab-639) Polyclonal Antibody (GenScript, A01042, lane 1, 2, and 3) and Rabbit Anti-IRS-1 (Phospho-Ser⁶³⁹) Polyclonal Antibody (GenScript, A01027, lane 4, 5, and 6)