

## DATASHEET

Version: 2016-08-17

### RAP1A and RAP1B Antibody, pAb, Rabbit

**Cat. No.:** A01047-40

**Size:** 40 µg

**Synonyms:** Rabbit Anti-RAP1A and RAP1B pAb;

#### Description:

RAP1A and RAP1B belong to a family of Ras-related proteins. These proteins share approximately 50% amino acid identity with the classical Ras proteins and have numerous structural features in common. Human RAP1B is 95% identical to RAP1A. It has been proposed that RAP1A and RAP1B may regulate RAS-mediated signalling and may also be involved in the regulation of integrin-mediated cell adhesion, although the mechanism of regulation is not known.

GenScript **Rabbit Anti-RAP1A and RAP1B Polyclonal**

**Antibody** is developed in rabbit using a KLH-coupled synthetic peptide, purified from rabbit antiserum by immunoaffinity chromatography, and supplied as 40 µg aliquot at concentration of 0.5 mg/ml.

**Immunogen:** Synthetic peptide (KLH-conjugated) of human RAP1A and RAP1B

**Host:** Rabbit

**Antigen Synonyms:** Human

**Conjugation:** Unconjugated

**Predicated Band Size:**

21 kD

**Observed Band Size:**

21 kD

**Formulation:**

1 mg/ml, lyophilized with PBS, pH 7.4, containing 0.02%

sodium azide

**Ig Subclass:** Rabbit IgG

**Specificity:** Reacts with human RAP1A and RAP1B.

Sequence homology predicts that it will also react with mouse, rat, bovine, chicken, common carp, zebrafish and African clawed frog RAP1A and RAP1B.

**Purification:** Immunoaffinity chromatography

#### Applications:

Working concentrations for specific applications should be determined by the investigator. The appropriate concentrations may be affected by secondary antibody affinity, antigen concentration, the sensitivity of the method of detection, temperature, the length of the incubations, and other factors. The suitability of this antibody for applications other than those listed below has not been determined. The following concentration ranges are recommended starting points for this product.

**ELISA:** 0.03-0.06 µg/ml

**Western blot:** 1.0 µg/ml

**Other applications:** user-optimized

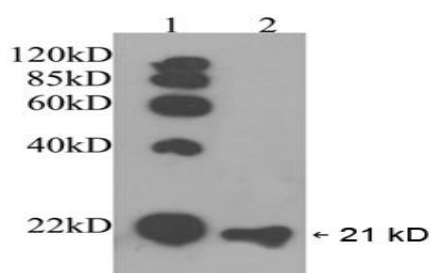
#### Reconstitution:

Reconstitute the lyophilized powder with deionized water (or equivalent) to an final concentration of 0.5 mg/ml.

#### Storage:

The antibody is stable in lyophilized form if stored at -20°C or below. The reconstituted antibody can be stored for 2-3 weeks at 2-8°C. For long term storage, aliquot and store at -20°C or below. Avoid repeated freezing and thawing cycles.

#### Example



Western blot analysis:

Lane 1: EasyWestern Protein Standard (GenScript, MM0908)

Lane 2: Hela cell lysate

Primary antibody: 1 µg/ml Rabbit Anti-RAP1A and RAP1B

Polyclonal Antibody (GenScript, A01047)

Secondary antibody: Goat Anti-Rabbit IgG (H&L) [HRP]

Polyclonal Antibody (GenScript, A00098, 1:5,000)

