

DATASHEET

Version: 2016-08-17

PIN1 Antibody, pAb, Rabbit**Cat. No.:** A01090-40**Size:** 40 µg**Synonyms:** Rabbit Anti-PIN1 pAb;**Description:**

PIN1 is an essential peptidyl-prolyl isomerase that regulates mitosis, presumably by interacting with NIMA and attenuating its mitosis-promoting activity. It displays a preference for an acidic residue N-terminal to the isomerized proline bond. It catalyzes pSer/Thr-Pro cis/trans isomerizations. PIN1 has been implicated in tau pathologies that underlie Alzheimer's disease. PIN1 binds to tau-phosphorylated sites, specifically on the Thr231-Pro site, where it induces conformational changes. PIN1 may be pivotal in maintaining normal neuronal function and preventing age-dependent neurodegeneration.

GenScript **Rabbit Anti-PIN1 Polyclonal Antibody** is developed in rabbit hosts using a KLH-coupled synthetic peptide within residues 50-100 of human PIN1 protein (Swiss Prot: Q13526).

Immunogen: Synthetic peptide (KLH-coupled) within residues 50-100 of human PIN1 protein (Swiss Prot: Q13526)

Host: Rabbit**Antigen Synonyms:** Human**Conjugation:** Unconjugated**Predicated Band Size:**

57 kD

Observed Band Size:

57 kD

Formulation:

0.5 mg/ml, lyophilized with PBS, pH 7.4, containing 0.02%

sodium azide

Ig Subclass: Rabbit IgG

Specificity: GenScript Rabbit Anti-PIN1 Polyclonal Antibody detects human PIN1 protein. Sequence homology predicts that it will also react with rat and mouse PIN1 proteins.

Purification: Immunoaffinity chromatography**Applications:**

Working concentrations for specific applications should be determined by the investigator. The appropriate concentrations may be affected by secondary antibody affinity, antigen concentration, the sensitivity of the method of detection, temperature, the length of the incubations, and other factors. The suitability of this antibody for applications other than those listed below has not been determined. The following concentration ranges are recommended starting points for this product.

ELISA: 0.05-0.2 µg/ml**Western blot:** 0.5-1 µg/ml**Other applications:** user-optimized

Species Reactivity: Human. This product has not yet been tested with other species.

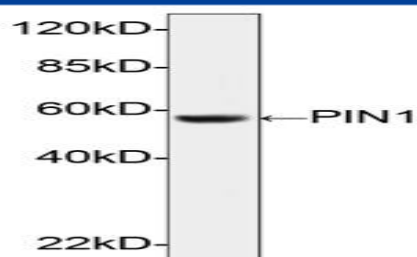
Reconstitution:

Reconstitute the lyophilized powder with deionized water (or equivalent) to an antibody concentration of 0.5 mg/ml.

Storage:

The antibody is stable in lyophilized form if stored at -20°C or below. The reconstituted antibody can be stored for 2-3 weeks at 2-8°C. For long term storage, aliquot and store at -20°C or below. Avoid repeated freezing and thawing cycles.

Example



Western blot analysis of human recombinant PIN1 fusion protein using PIN1 Antibody , pAb, Rabbit (GenScript, A01090, 1 μ g/ml). The signal was developed with IRDye[™] 800 Conjugated Goat Anti-Rabbit IgG.

Predicted Size: 57 kD

Observed Size: 57 kD