

## DATASHEET

Version: 2016-08-17

### Tau Antibody (Phospho-Ser<sup>422</sup>), pAb, Rabbit

**Cat. No.:** A01148-100

**Size:** 100 µg

**Synonyms:** Rabbit Anti-Tau (Phospho-Ser<sup>422</sup>) pAb;

**Description:**

none

**Immunogen:** Synthetic phosphopeptide derived from human tau around the phosphorylation site of serine 422 (V-D-S<sup>P</sup>-P-Q).

**Host:** Rabbit

**Antigen Synonyms:** Human

**Conjugation:** Unconjugated

**Predicated Band Size:**

62 kD

**Observed Band Size:**

62 kD

**Formulation:**

1 mg/ml in phosphate buffered saline (without Mg<sup>2+</sup> and Ca<sup>2+</sup>), pH 7.4, 150 mM NaCl, 0.02% sodium azide, and 50% glycerol

**Ig Subclass:** Rabbit IgG

**Specificity:** GenScript Rabbit Anti-Tau (phospho-Ser<sup>422</sup>) antibody detects endogenous levels of tau only when phosphorylated at serine 422.

**Purification:** The antibody is affinity purified from rabbit antiserum by affinity chromatography using an epitope-specific phosphopeptide. The antibody against non-phosphopeptide is removed by chromatography using a non-phosphopeptide corresponding to the phosphorylation site.

**Applications:**

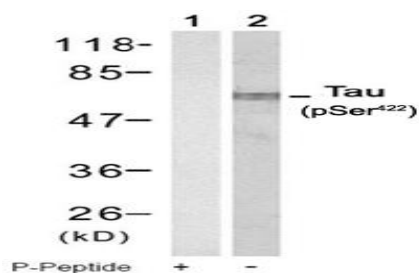
**Western blot:** 1:500-1,000

**Species Reactivity:** Human, mouse, rat

**Storage:**

The product remains stable for up to one year if stored at -20°C.

**Example**



Western blot analysis of extract from mouse brain tissue using Rabbit Anti-Tau (Phospho-Ser<sup>422</sup>) Polyclonal Antibody (GenScript, A01148)