

DATASHEET

Version: 2016-08-17

HSF1 Antibody (Phospho-Ser³⁰⁷), pAb, Rabbit

Cat. No.: A01164-100

Size: 100 µg

Synonyms: Rabbit Anti-HSF1 (Phospho-Ser³⁰⁷) pAb;

Description:

none

Immunogen: Synthesized phosphopeptide derived from human HSF1 around the phosphorylation site of serine 307 (P-Q-S^P-P-R).

Host: Rabbit

Antigen Synonyms: Human

Conjugation: Unconjugated

Predicated Band Size:

82 kD

Observed Band Size:

82 kD

Formulation:

1 mg/ml in phosphate buffered saline (without Mg²⁺ and Ca²⁺), pH 7.4, 150 mM NaCl, 0.02% sodium azide and 50% glycerol

Ig Subclass: Rabbit IgG

Specificity: GenScript Rabbit Anti-HSF1 (Phospho-Ser³⁰⁷) antibody detects endogenous levels of HSF1 only when phosphorylated at serine 307.

Purification: The antibody was affinity-purified from rabbit antiserum by affinity chromatography using epitope-specific phosphopeptide. The antibody against non-phosphopeptide was removed by chromatography using non-phosphopeptide corresponding to the phosphorylation site.

Applications:

Western blot: 1:500-1:1,000

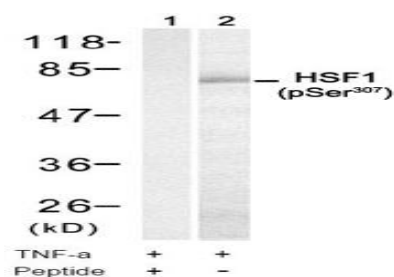
IF: 1:100-1:200

Species Reactivity: Human

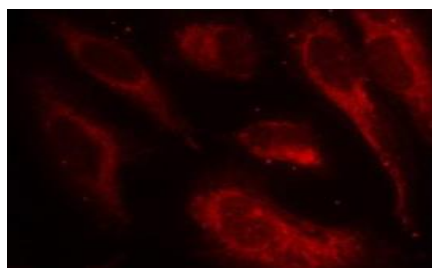
Storage:

The product remains stable for up to one year if stored at -20°C.

Example



Western blot analysis of extract from HUVEC cell treated with TNF-α using Rabbit Anti-HSF1 (Phospho-Ser³⁰⁷) Polyclonal Antibody (GenScript, A01164)



Immunofluorescence staining of methanol-fixed HeLa cells using Rabbit Anti-HSF1 (Phospho-Ser³⁰⁷) Polyclonal Antibody (GenScript, A01164)