

## DATASHEET

Version: 2016-08-17

### Progesterone Receptor Antibody (Ab-190), pAb, Rabbit

**Cat. No.:** A01165-100

**Size:** 100 µg

**Synonyms:** Rabbit Anti-Progesterone Receptor (Ab-190) pAb;

**Description:**

none

**Immunogen:** Synthesized non-phosphopeptide derived from human Progesterone Receptor around the phosphorylation site of serine 190 (G-L-S<sup>P</sup>-P-A).

**Host:** Rabbit

**Antigen Synonyms:** Human

**Conjugation:** Unconjugated

**Predicated Band Size:**

99 kD

**Observed Band Size:**

99 kD

**Formulation:**

1 mg/ml in phosphate buffered saline (without Mg<sup>2+</sup> and Ca<sup>2+</sup>), pH 7.4, 150 mM NaCl, 0.02% sodium azide and 50% glycerol

**Ig Subclass:** Rabbit IgG

**Specificity:** GenScript Rabbit Anti-Progesterone Receptor (Ab-190) antibody detects endogenous levels of total progesterone receptor protein.

**Purification:** The antibody was affinity-purified from rabbit antiserum by affinity chromatography using epitope-specific immunogen.

**Applications:**

**Western blot:** 1:500-1,000

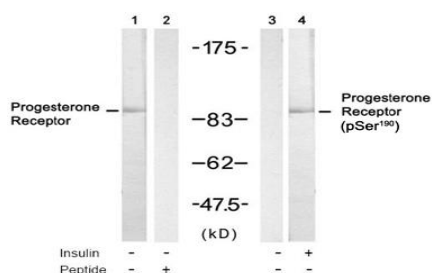
**IF:** 1:100-1:200

**Species Reactivity:** Human

**Storage:**

The product remains stable for up to one year if stored at -20°C.

### Example



Western blot analysis of extract from SKOV3 cell untreated or treated with insulin using Rabbit Anti-Progesterone Receptor (Ab-190) Polyclonal Antibody (GenScript, A01165, Lane 1 and 2) and Rabbit Anti-Progesterone Receptor (Phospho-Ser<sup>190</sup>) Polyclonal Antibody (GenScript, A00312, Lane 3 and 4)