

DATASHEET

Version: 2016-08-17

Synaptotagmin I/II Antibody (Ab-202/199), pAb, Rabbit

Cat. No.: A01170-100**Size:** 100 µg**Synonyms:** Rabbit Anti-Synaptotagmin I/II (Ab-202/199)
Polyclonal Antibody;**Description:**

none

Immunogen: Synthesized non-phosphopeptide derived from human Synaptotagmin I/II around the phosphorylation site of threonine 202/199 (R-K-T^P-L-N)**Host:** Rabbit**Antigen Synonyms:** Human**Conjugation:** Unconjugated**Predicated Band Size:**

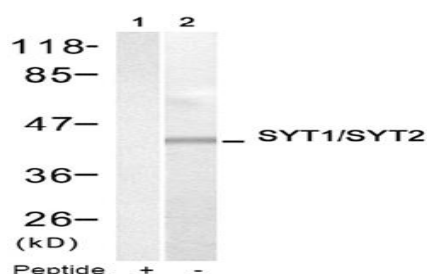
46 kD

Observed Band Size:

46 kD

Formulation:1 mg/ml in phosphate buffered saline (without Mg²⁺ and Ca²⁺), pH 7.4, 150 mM NaCl, 0.02% sodium azide, and 50% glycerol**Ig Subclass:** Rabbit IgG**Specificity:** GenScript Rabbit Anti-Synaptotagmin I/II (Ab-202/199) Polyclonal Antibody detects endogenous levels of total Synaptotagmin I/II protein.**Purification:** The antibody is affinity-purified from rabbit antiserum by affinity chromatography using epitope-specific immunogen.**Applications:****WB:** 1:500-1:1,000**IF:** 1:100-1:200**Species Reactivity:** Human, mouse, rat**Storage:**

Store at -20°C/1 year.

Example

Western blot analysis of extract from HeLa cells using Rabbit Anti-Synaptotagmin I/II (Ab-202/199) Polyclonal Antibody (GenScript, A01170, lane 1 and 2)