

**DATASHEET**

Version: 2016-08-17

**Calcineurin A Antibody, pAb, Rabbit****Cat. No.:** A01199-40**Size:** 40 µg**Synonyms:** Rabbit Anti-Calcineurin A pAb;**Description:**

Calcineurin is a heterodimer protein that binds to  $\text{Ca}^{2+}$ . A  $\text{Ca}^{2+}$ /calmodulin-regulated protein phosphatase, it is composed of a 19 kD calcineurin B (CnB) and a 61 kD calmodulin-binding catalytic subunit, calcineurin A (CnA). Calcineurin A was first detected in skeletal muscle and brain tissues, but it has since been found in all cell types, from yeast to mammalian.

Calcineurin A may be responsible for the calmodulin activation property of calcineurin. There is evidence suggesting that alternative splicing could give rise to different forms of calcineurin A.

GenScript **Rabbit Anti-Calcineurin A Polyclonal Antibody** is developed in rabbit hosts using a KLH-coupled synthetic peptide within residues 450-500 of human calcineurin A protein (Swiss Prot: Q08209).

**Immunogen:** Synthetic peptide (KLH-coupled) within residues 450-500 of human calcineurin A protein (Swiss Prot: Q08209)

**Host:** Rabbit**Antigen Synonyms:** Human**Conjugation:** Unconjugated**Predicated Band Size:**

59 kD

**Observed Band Size:**

115 kD, 60 kD, 32 kD

**Formulation:**

0.5 mg/ml, lyophilized with PBS, pH 7.4, containing 0.02%

sodium azide

**Ig Subclass:** Rabbit IgG

**Specificity:** GenScript Rabbit Anti-Calcineurin A Polyclonal Antibody detects endogenous levels of calcineurin A protein. Sequence homology predicts that it will also react with rat calcineurin A.

**Purification:** Immunoaffinity chromatography**Applications:**

Working concentrations for specific applications should be determined by the investigator. The appropriate concentrations may be affected by secondary antibody affinity, antigen concentration, the sensitivity of the method of detection, temperature, the length of the incubations, and other factors. The suitability of this antibody for applications other than those listed below has not been determined. The following concentration ranges are recommended starting points for this product.

**ELISA:** 0.05-0.2 µg/ml**Western blot:** 0.5-1 µg/ml**Immunoprecipitation:** 2-10 µg/mg of lysate**Other applications:** user-optimized

**Species Reactivity:** Human and mouse. This product has not yet been tested with other species.

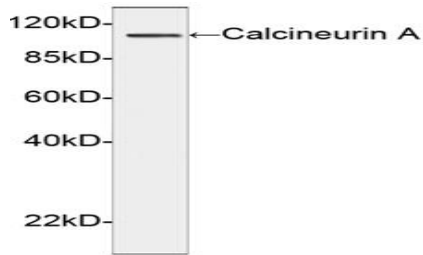
**Reconstitution:**

Reconstitute the lyophilized powder with deionized water (or equivalent) to an antibody concentration of 0.5 mg/ml.

**Storage:**

The antibody is stable in lyophilized form if stored at -20°C or below. The reconstituted antibody can be stored for 2-3 weeks at 2-8°C. For long term storage, aliquot and store at -20°C or below. Avoid repeated freezing and thawing cycles.

**Example**

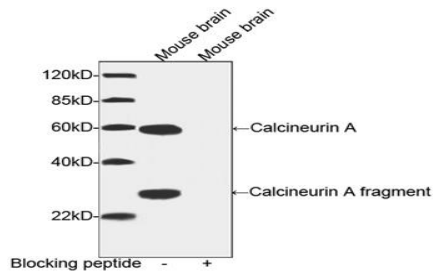


Western blot analysis of human recombinant calcineurin A fusion protein using Calcineurin A Antibody, pAb, Rabbit (GenScript, A01199, 1 µg/ml)

The signal was developed with IRDye™ 800 Conjugated Goat Anti-Rabbit IgG.

Predicted Size: 115 kD

Observed Size: 115 kD

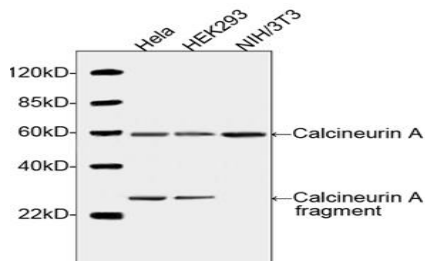


Western blot analysis of tissue lysates using Calcineurin A Antibody, pAb, Rabbit (GenScript, A01199, 1 µg/ml)

The signal was developed with IRDye™ 800 Conjugated Goat Anti-Rabbit IgG.

Predicted Size: 59 kD

Observed Size: 60 kD, 32 kD



Western blot analysis of cell lysates using Calcineurin A Antibody, pAb, Rabbit (GenScript, A01199, 1 µg/ml)

The signal was developed with IRDye™ 800 Conjugated Goat Anti-Rabbit IgG.

Predicted Size: 59 kD

Observed Size: 60 kD, 32 kD