

DATASHEET

Version: 2016-08-17

Smad3 Antibody (Ab-425), pAb, Rabbit**Cat. No.:** A01225-100**Size:** 100 µg**Synonyms:** Rabbit Anti-Smad3 (Ab-425) pAb;**Description:**

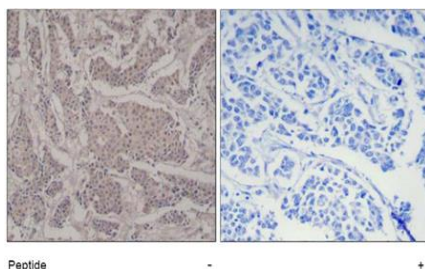
none

Immunogen: Synthesized non-phosphopeptide derived from human Smad3 around the phosphorylation site of serine 425 (C-S-S-V-S^P).**Host:** Rabbit**Antigen Synonyms:** Human**Conjugation:** Unconjugated**Formulation:**1 mg/ml in phosphate buffered saline (without Mg²⁺ and Ca²⁺),

pH 7.4, 150 mM NaCl, 0.02% sodium azide and 50% glycerol

Ig Subclass: Rabbit IgG**Specificity:** Rabbit Anti-Smad3 (Ab-425) Polyclonal Antibody detects endogenous levels of total Smad3 protein.**Purification:** The antibody was affinity-purified from rabbit antiserum by affinity-chromatography using epitope-specific immunogen.**Applications:****IHC:** 1:50-1:100**IF:** 1:100-1:200**Species Reactivity:** Human, Mouse, Rat**Storage:**

Store at -20°C/1 year

Example

Immunohistochemical analysis of paraffin-embedded human breast carcinoma tissue using Rabbit Anti-Smad3 (Ab-425) Polyclonal Antibody (GenScript, A01225)