

DATASHEET

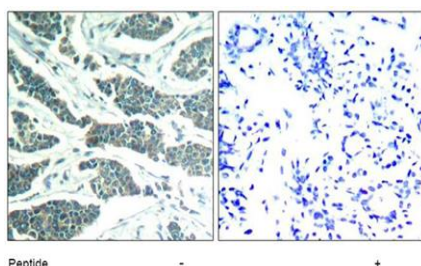
Version: 2016-08-17

AKT1/AKT2/AKT3 Antibody (Ab-315/316/312), pAb, Rabbit**Cat. No.:** A01227-100**Size:** 100 µg**Synonyms:** Rabbit Anti-AKT1/AKT2/AKT3(Ab-315/316/312) pAb;**Description:**

none

Immunogen: Synthesized non-phosphopeptide derived from human AKT1/AKT2/AKT3 around the phosphorylation site of tyrosine 315/316/312 (P-E-Y^P-L-A).**Host:** Rabbit**Antigen Synonyms:** Human**Conjugation:** Unconjugated**Formulation:**1 mg/ml in phosphate buffered saline (without Mg²⁺ and Ca²⁺), pH 7.4, 150 mM NaCl, 0.02% sodium azide and 50% glycerol**Ig Subclass:** Rabbit IgG**Specificity:** Rabbit Anti-AKT1/AKT2/AKT3(Ab-315/316/312) Polyclonal Antibody detects endogenous levels of total AKT1/AKT2/AKT3 protein.**Purification:** The antibody was affinity-purified from rabbit antiserum by affinity-chromatography using epitope-specific immunogen.**Applications:****IHC:** 1:50-1:100**Species Reactivity:** Human, Mouse, Rat**Storage:**

Store at -20°C/1 year

Example

Immunohistochemical analysis of paraffin-embedded human breast carcinoma tissue using Rabbit Anti-AKT1/AKT2/AKT3 (Ab-315/316/312) Polyclonal Antibody (GenScript, A01227)