

**DATASHEET**

Version: 2016-08-17

**β-Catenin Antibody, pAb, Rabbit****Cat. No.:** A01235-40**Size:** 40 µg**Synonyms:** Rabbit Anti β-Catenin (N-terminal ) Polyclonal Antibody;**Description:**

β-Catenin is an adherens junction protein. Adherens junctions (also called AJs and the zonula adherens) are critical for the establishment and maintenance of epithelial layers, such as those lining organ surfaces. AJs mediate adhesion between cells, communicate signals that neighboring cells are present, and anchor the actin cytoskeleton. In serving these roles, AJs regulate normal cell growth and behavior. At several stages of embryogenesis, wound healing, and tumor cell metastasis, cells form and leave epithelia. This process, which involves the disruption and reestablishment of epithelial cell-cell contacts, may be regulated by the disassembly and assembly of AJs. GenScript **Rabbit Anti-β-Catenin Polyclonal Antibody** is developed in rabbit hosts using a synthetic peptide (KLH-coupled) within residues 30-80 of human β-catenin protein (Swiss Prot: P35222).

**Immunogen:** Synthetic peptide (KLH-coupled) within residues 30-80 of human β-catenin (Swiss Prot: P35222)**Host:** Rabbit**Antigen Synonyms:** Human**Conjugation:** Unconjugated**Predicated Band Size:**

85 kD

**Observed Band Size:**

90 kD

**Formulation:****Example**

0.5 mg/ml, lyophilized with PBS, pH 7.4, containing 0.02% sodium azide

**Ig Subclass:** Rabbit IgG**Specificity:** GenScript Rabbit Anti-β-Catenin Polyclonal Antibody detects human β-catenin protein. Predicted to react with rat according to sequence homology.**Purification:** Immunoaffinity chromatography**Applications:**

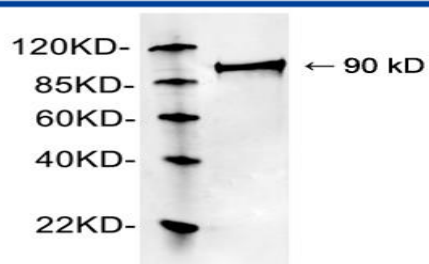
Working concentrations for specific applications should be determined by the investigator. The appropriate concentrations may be affected by secondary antibody affinity, antigen concentration, the sensitivity of the method of detection, temperature, the length of the incubations, and other factors. The suitability of this antibody for applications other than those listed below has not been determined. The following concentration ranges are recommended starting points for this product.

**ELISA:** 0.05-0.2 µg/ml**Western blot:** 0.5-2 µg/ml**Other applications:** user optimized**Species Reactivity:** Human. This product has not yet been tested with other species.**Reconstitution:**

Reconstitute the lyophilized powder with deionized water (or equivalent) to an final concentration of 0.5 mg/ml.

**Storage:**

The antibody is stable in lyophilized form if stored at -20°C or below. The reconstituted antibody can be stored for 2-3 weeks at 2-8°C. For long term storage, aliquot and store at -20°C or below. Avoid repeated freezing and thawing cycles.



Western blot analysis of recombinant human  $\beta$ -Catenin protein using 1  $\mu$ g/ml Rabbit Anti- $\beta$ -Catenin Polyclonal Antibody (GenScript, A01235)

The signal was developed with IRDye<sup>TM</sup> 800 Conjugated Goat Anti-Rabbit IgG.