

DATASHEET

Version: 2016-08-17

Cofilin Antibody, pAb, Rabbit**Cat. No.:** A01239-40**Size:** 40 µg**Synonyms:** Rabbit Anti-Cofilin pAb;**Description:**

Cofilin belongs to the actin-binding protein ADF family and it contains 1 ADF-H domain. Cofilin controls reversible actin polymerization and depolymerization in a pH-sensitive manner. It has the ability to bind G- and F-actin at a 1:1 ratio. It is the major component of intranuclear and cytoplasmic actin rods. It is involved in the translocation of the actin-cofilin complex from cytoplasm to nucleus. This protein is widely distributed in various tissues.

GenScript **Rabbit Anti-Cofilin Polyclonal Antibody** is developed in rabbit hosts using a KLH-coupled synthetic peptide from amino terminal of human cofilin protein (Swiss Prot: P23528).

Immunogen: Synthetic peptide (KLH-coupled) from amino terminal of human cofilin protein (Swiss Prot: P23528).

Host: Rabbit**Antigen Synonyms:** Human**Conjugation:** Unconjugated**Predicated Band Size:**

18 kD

Observed Band Size:

18 kD

Formulation:

0.5 mg/ml, lyophilized with PBS, pH 7.4, containing 0.02% sodium azide

Ig Subclass: Rabbit IgG**Example****Specificity:** GenScript Rabbit Anti-Cofilin Polyclonal

Antibody detects endogenous levels of human and mouse cofilin protein. It is predicted to react with cynomolgus monkey, sheep, pig, and rat cofilin protein according to sequence homology.

Purification: Immunoaffinity chromatography**Applications:**

Working concentrations for specific applications should be determined by the investigator. The appropriate concentrations may be affected by secondary antibody affinity, antigen concentration, the sensitivity of the method of detection, temperature, the length of the incubations, and other factors. The suitability of this antibody for applications other than those listed below has not been determined. The following concentration ranges are recommended starting points for this product.

ELISA: 0.05-0.2 µg/ml**Western blot:** 0.5-1 µg/ml**Immunohistochemistry:** 5-10 µg/ml**Other applications:** user-optimized

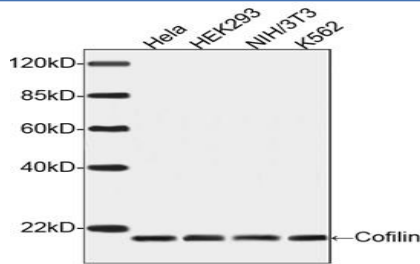
Species Reactivity: Human and mouse. This product has not yet been tested with other species.

Reconstitution:

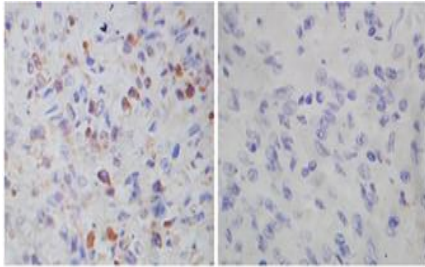
Reconstitute the lyophilized powder with deionized water (or equivalent) to an antibody concentration of 0.5 mg/ml.

Storage:

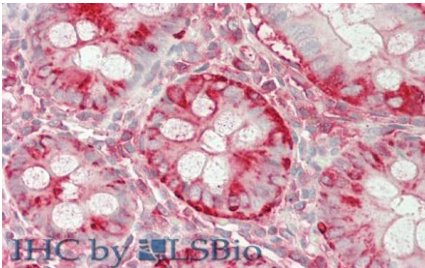
The antibody is stable in lyophilized form if stored at -20°C or below. The reconstituted antibody can be stored for 2-3 weeks at 2-8°C. For long term storage, aliquot and store at -20°C or below. Avoid repeated freezing and thawing cycles.



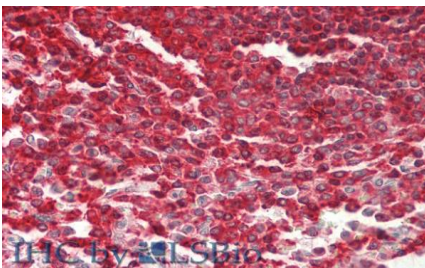
Western blot analysis of cell lysates using Cofilin Antibody, pAb, Rabbit (GenScript, A01239, 1 µg/ml)
The signal was developed with IRDye™ 800 Conjugated Goat Anti-Rabbit IgG.
Predicted Size: 18 kD
Observed Size: 18 kD



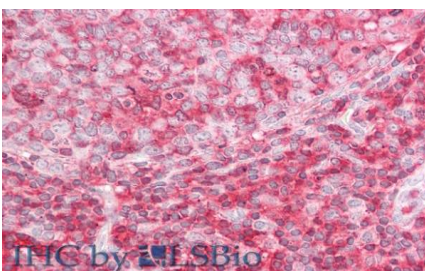
Immunohistochemistry analysis of human spleen tissue slide (Paraffin embedded) using Rabbit Anti-Cofilin Polyclonal Antibody (Left, GenScript, A01239) and Purified Rabbit IgG (Whole Molecule) Control (Right, GenScript, A01008)



Immunohistochemistry analysis of human colon tissue slide (Paraffin embedded) using Cofilin Antibody, pAb, Rabbit (GenScript, Cat.No. A01239, 5 µg/ml)



Immunohistochemistry analysis of human spleen tissue slide (Paraffin embedded) using Cofilin Antibody, pAb, Rabbit (GenScript, Cat.No. A01239, 5 µg/ml)



Immunohistochemistry analysis of human tonsil tissue slide (Paraffin embedded) using Cofilin Antibody, pAb, Rabbit (GenScript, Cat.No. A01239, 5 µg/ml)