

DATASHEET

Version: 2016-08-17

AP2M1 Antibody, pAb, Rabbit**Cat. No.:** A01247-40**Size:** 40 µg**Synonyms:** Rabbit Anti AP2M1 Polyclonal Antibody (amino terminus);**Description:**

AP2M1 is a subunit of the heterotetrameric coat assembly protein complex 2 (AP2), which belongs to the adaptor complexes medium subunit family. AP2 is a heterotetramer composed of two large adaptins (either alpha-type subunit AP2A1 or AP2A2 paired with beta-type subunit AP2B1), a medium adaptin (mu-type subunit AP2M1) and a small adaptin (sigma-type subunit AP2S1). These component link clathrin to receptors in coated vesicles. Clathrin-associated protein complexes are believed to interact with the cytoplasmic tails of membrane proteins, leading to their selection and concentration.

GenScript **Rabbit Anti-AP2M1 Polyclonal Antibody** is developed in rabbit hosts using a synthetic peptide (KLH-coupled) from N-terminal of human AP2M1 protein (Swiss Prot: Q96CW1).

Immunogen: Synthetic peptide (KLH-coupled) from N-terminal of human AP2M1 protein (Swiss Prot: Q96CW1)

Host: Rabbit**Antigen Synonyms:** Human**Conjugation:** Unconjugated**Predicated Band Size:**

50 kD

Observed Band Size:

50 kD

Formulation:

0.5 mg/ml, lyophilized with PBS, pH 7.4, containing 0.02%

sodium azide

Ig Subclass: Rabbit IgG

Specificity: GenScript Rabbit Anti-AP2M1 Polyclonal Antibody detects endogenous levels of human AP2M1 protein. Sequence homology predicts that it will also react with mouse and rat AP2M1 proteins.

Purification: Immunoaffinity chromatography**Applications:**

Working concentrations for specific applications should be determined by the investigator. The appropriate concentrations may be affected by secondary antibody affinity, antigen concentration, the sensitivity of the method of detection, temperature, the length of the incubations, and other factors. The suitability of this antibody for applications other than those listed below has not been determined. The following concentration ranges are recommended starting points for this product.

ELISA: 0.05-0.2 µg/ml**Western blot:** 0.5-1 µg/ml**Immunohistochemistry:** 5-10 µg/ml **Other applications:** user optimized

Species Reactivity: Human. This product has not yet been tested with other species.

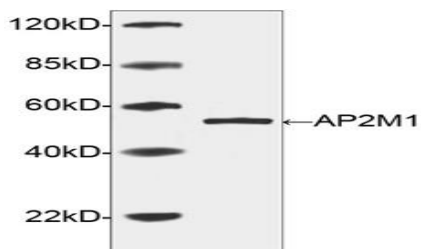
Reconstitution:

Reconstitute the lyophilized powder with deionized water (or equivalent) to an antibody concentration of 0.5 mg/ml.

Storage:

The antibody is stable in lyophilized form if stored at -20°C or below. The reconstituted antibody can be stored for 2-3 weeks at 2-8°C. For long term storage, aliquot and store at -20°C or below. Avoid repeated freezing and thawing cycles.

Example

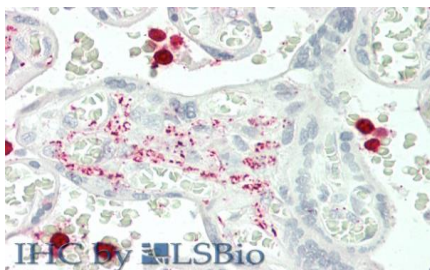


Western blot analysis of human recombinant AP2M1 fusion protein, using AP2M1 Antibody, pAb, Rabbit (GenScript, A01247, 1 µg/ml)

The signal was developed with IRDye™ 800 Conjugated Goat Anti-Rabbit IgG.

Predicted Size: 50 kD

Observed Size: 50 kD



Immunohistochemistry analysis of human placenta tissue slide (Paraffin embedded) using AP2M1 Antibody, pAb, Rabbit (GenScript, Cat.No. A01247, 10 µg/ml)