

**DATASHEET**

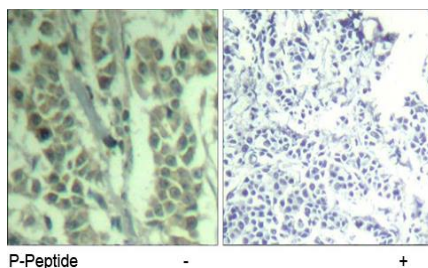
Version: 2016-08-17

**c-Cbl Antibody (Phospho-Tyr<sup>700</sup>), pAb, Rabbit****Cat. No.:** A01276-100**Size:** 100 µg**Synonyms:** c-Cbl (phospho-Tyr700) Antibody ;**Description:**

none

**Immunogen:** Synthesized phosphopeptide derived from human c-Cbl around the phosphorylation site of tyrosine 700 (T-E-Y<sup>P</sup>-M-T)**Host:** Rabbit**Antigen Synonyms:** Human**Conjugation:** Unconjugated**Formulation:**1 mg/ml in phosphate buffered saline (without Mg<sup>2+</sup> and Ca<sup>2+</sup>), pH 7.4, 150 mM NaCl, 0.02% sodium azide, and 50% glycerol**Ig Subclass:** Rabbit IgG**Specificity:** GenScript Rabbit Anti-c-Cbl (Phospho-Tyr<sup>700</sup>) Polyclonal Antibody detects endogenous levels of c-Cbl only when phosphorylated at tyrosine 700.**Purification:** The antibody is affinity-purified from rabbit antiserum by affinity chromatography using epitope-specific phosphopeptide. The antibody against non-phosphopeptide is removed by chromatography using non-phosphopeptide corresponding to the phosphorylation site.**Applications:****IHC:** 1:50-100**IF:** 1:100-1:200**Species Reactivity:** Human**Storage:**

Store at -20°C/1 year.

**Example**

Immunohistochemical analysis of paraffin-embedded human breast carcinoma tissue using Rabbit Anti-c-Cbl (Phospho-Tyr<sup>700</sup>) Polyclonal Antibody (GenScript, A01276)