

## DATASHEET

Version: 2016-08-17

### Cofilin Antibody, pAb, Rabbit

**Cat. No.:** A01277-40

**Size:** 40 µg

**Synonyms:** Rabbit Anti-Cofilin Polyclonal Antibody;

#### Description:

Cofilin belongs to the actin-binding ADF protein family. It contains one ADF-H domain. Cofilin controls reversible actin polymerization and depolymerization in a pH-sensitive manner. It has the ability to bind G- and F-actin at a 1:1 ratio. It is the major component of both intranuclear and cytoplasmic actin rods. It is involved in the translocation of the actin-cofilin complex from the cytoplasm to the nucleus. This protein is widely distributed in various tissues.

GenScript Rabbit Anti-Cofilin Polyclonal Antibody is developed in rabbit using a KLH-coupled synthetic peptide within residues 100-150 of human cofilin protein (Swiss Prot: P23528).

**Immunogen:** KLH-coupled synthetic peptide within residues 100-150 of human cofilin protein (Swiss Prot: P23528)

**Host:** Rabbit

**Antigen Synonyms:** Human

**Conjugation:** Unconjugated

#### Formulation:

0.5 mg/ml, lyophilized with PBS, pH 7.4, containing 0.02% sodium azide.

**Ig Subclass:** Rabbit IgG

**Specificity:** GenScript Rabbit Anti-Cofilin Polyclonal Antibody detects endogenous levels of human and mouse

cofilin protein. Sequence homology predicts that it will also react with cynomolgus monkey, sheep, pig, and rat cofilin protein.

**Purification:** Immunoaffinity chromatography

#### Applications:

Working concentrations for specific applications should be determined by the investigator. The appropriate concentrations may be affected by secondary antibody affinity, antigen concentration, the sensitivity of the method of detection, temperature, the length of the incubations, and other factors. The suitability of this antibody for applications other than those listed below has not been determined. The following concentration ranges are recommended starting points for this product.

**ELISA:** 0.05-0.2 µg/ml

**Western blot:** 0.5-1 µg/ml

**Other applications:** user optimized

**Species Reactivity:** Human and mouse. This product has not yet been tested with other species.

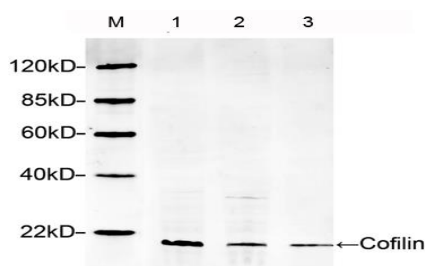
#### Reconstitution:

Reconstitute the lyophilized powder with deionized water (or equivalent) to an antibody concentration of 0.5 mg/ml.

#### Storage:

The antibody is stable in lyophilized form if stored at -20°C or below. The reconstituted antibody can be stored for 2-3 weeks at 2-8°C. For long term storage, aliquot and store at -20°C or below. Avoid repeated freezing and thawing cycles.

#### Example



Lane 1: HeLa lysate

Lane 2: HEK293 lysate

Lane 3: NIH/3T3 lysate

Western blot analysis cell lysates using 1 µg/ml Rabbit Anti-Cofilin Polyclonal Antibody (GenScript, A01277)

The signal was developed with IRDye™ 800 Conjugated Goat Anti-Rabbit IgG.