

## DATASHEET

Version: 2016-08-17

### GM-CSF Antibody (1B3E11), mAb, Mouse

**Cat. No.:** A01287-40

**Size:** 40 µg

**Synonyms:** Mouse Anti-huGM-CSF mAb;

#### Description:

Granulocyte-Macrophage-CSF induces myeloid progenitor cells from bone marrow to form colonies containing macrophages and granulocytes in a semisolid media. GM-CSF also acts upon mature macrophages, eosinophils and neutrophils to stimulate various functional activities. GM-CSF is an acidic glycoprotein (23 kD mouse, 18-22 kD human) which binds to high affinity receptors on GM-CSF sensitive cells. Although human and mouse GM-CSF share 54% amino acid sequence homology, their biological actions are species-specific. Other growth factors and CSFs modulate receptor binding or actions of GM-CSF.

**Immunogen:** GM-CSF full length recombinant protein

**Host:** Mouse

**Antigen Synonyms:** Human

**Conjugation:** Unconjugated

#### Fusion Partner:

Spleen cells fused with SP2/0-Ag14 mouse myeloma cells

#### Formulation:

0.5 mg/ml, lyophilized with PBS, pH 7.4, containing 0.02% sodium azide

**Clone:** 1B3E11

**Ig Subclass:** Mouse IgG2b, k

**Specificity:** This product reacts with human GM-CSF. It has not yet been tested with other species.

**Purification:** Protein A affinity column

#### Applications:

Working concentrations for specific applications should be determined by the investigator. The appropriate concentrations may be affected by secondary antibody affinity, antigen concentration, the sensitivity of the method of detection, temperature, the length of the incubations, and other factors. The suitability of this antibody for applications other than those listed below has not been determined. The following concentration ranges are recommended starting points for this product.

**ELISA:** 0.05-0.2 µg/ml

**Western blot:** 0.1-1.0 µg/ml

**Other applications:** user-optimized

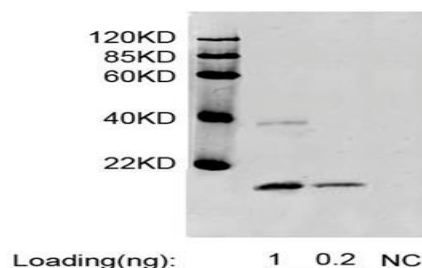
#### Reconstitution:

Reconstitute the lyophilized powder with deionized water (or equivalent) to an final concentration of 0.5 mg/ml.

#### Storage:

The antibody is stable in lyophilized form if stored at -20°C or below. The reconstituted antibody can be stored for 2-3 weeks at 2-8°C. For long term storage, aliquot and store at -20°C or below. Avoid repeated freezing and thawing cycles.

#### Example



Western blot analysis of Mouse Anti-huGM-CSF Monoclonal Antibody (GenScript, A01287)

Loading: GM-CSF fusion protein

Primary antibody: 1 µg/ml Mouse Anti-huGM-CSF Monoclonal Antibody (GenScript, A01287)

Secondary antibody: IRDye™ 800 Conjugated affinity Purified anti-Mouse IgG [Goat]