

DATASHEET

Version: 2016-08-17

TDP43 Antibody, pAb, Rabbit**Cat. No.:** A01304-40**Size:** 40 µg**Synonyms:** Rabbit Anti-TARDBP antibody;**Description:**

TDP43 (known as TARDBP, TAR DNA-binding protein 43) is a DNA and RNA-binding protein which regulates transcription and splicing. The deduced 414-amino acid TDP43 contains a ribonucleoprotein (RNP)-binding domain and a glycine-rich region. TDP43 protein is located at cell nuclear in normal condition. TDP43 promotes skipping of exon 9 of the CFTR gene and also inhibits human CFTR exon 9 splicing. A hyperphosphorylated, ubiquitinated, and cleaved form of TDP43, known as pathologic TDP43, is the major disease protein in ubiquitin-positive, tau-, and alpha-synuclein-negative frontotemporal dementia (FTLD-U) and amyotrophic lateral sclerosis (ALS). Under pathologic conditions in FTLD-U, TDP43 is likely to be eliminated from nuclei of ubiquitinated inclusion-bearing neurons, a consequence of which may be a loss of TDP43 nuclear functions. TDP43 has been implicated in AIDS disease.

GenScript **Rabbit Anti-TDP43 Polyclonal Antibody** is developed in rabbit using a KLH-coupled synthetic peptide from within residues 250-300 of human TDP43 protein (Swiss Prot: Q13148).

Immunogen: KLH-coupled synthetic peptide from within residues 250-300 of human TDP43 protein (Swiss Prot: Q13148).

Host: Rabbit**Antigen Synonyms:** Human**Conjugation:** Unconjugated**Predicated Band Size:**

45 kD

Observed Band Size:**Example**

45 kD

Formulation:

0.5 mg/ml, lyophilized with PBS, pH 7.4, containing 0.02% sodium azide

Ig Subclass: Rabbit IgG

Specificity: GenScript Rabbit Anti-TDP43 Polyclonal Antibody detects endogenous levels of human, mouse and rat TDP43 protein.

Purification: Immunoaffinity chromatography**Applications:**

Working concentrations for specific applications should be determined by the investigator. The appropriate concentrations may be affected by secondary antibody affinity, antigen concentration, the sensitivity of the method of detection, temperature, the length of the incubations, and other factors. The suitability of this antibody for applications other than those listed below has not been determined. The following concentration ranges are recommended starting points for this product.

ELISA: 0.05-0.2 µg/ml**Western blot:** 0.5-1 µg/ml**Other applications:** user-optimized

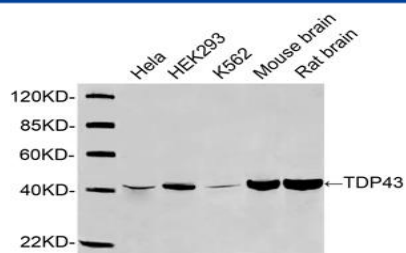
Species Reactivity: Human, mouse and rat. Reactivity to other species is not tested yet.

Reconstitution:

Reconstitute the lyophilized powder with deionized water (or equivalent) to an antibody concentration of 0.5 mg/ml.

Storage:

The antibody is stable in lyophilized form if stored at -20°C or below. The reconstituted antibody can be stored for 2-3 weeks at 2-8°C. For long term storage, aliquot and store at -20°C or below. Avoid repeated freezing and thawing cycles.



Western blot analysis of lysates using 1 μ g/ml Rabbit Anti-TDP43 Polyclonal Antibody (GenScript, A01304)

The signal was developed with IRDyeTM 800 Conjugated Goat Anti-Rabbit IgG.