

## DATASHEET

Version: 2016-08-17

# Glutamine Synthetase Antibody, pAb, Rabbit

**Cat. No.:** A01305-100

**Size:** 100 µg

**Synonyms:** Rabbit Anti Glutamine Synthetase pAb;

### Description:

Glutamine synthetase is an enzyme that plays an essential role in the metabolism of nitrogen by catalyzing the condensation of glutamate and ammonia to form glutamine. Glutamine synthetase activity is a useful marker for astrocytes and an important differentiation feature in retina. It is also considered to be a key enzyme in the recycling of the neurotransmitter glutamate.

GenScript **Rabbit Anti-Glutamine Synthetase Polyclonal Antibody** is developed in rabbit using a KLH-coupled synthetic peptide from within residues 300-350 of human Glutamine Synthetase protein (Swiss Prot: P15104).

**Immunogen:** KLH-coupled synthetic peptide from within residues 300-350 of Human Glutamine Synthetase protein (Swiss Prot: P15104).

**Host:** Rabbit

**Antigen Synonyms:** Human

**Conjugation:** Unconjugated

### Formulation:

0.5 mg/ml, lyophilized with PBS, pH 7.4, containing 0.02% sodium azide.

**Ig Subclass:** Rabbit IgG

**Specificity:** GenScript Rabbit Anti-Glutamine Synthetase Polyclonal Antibody detects endogenous levels of human, mouse and rat Glutamine Synthetase protein.

**Purification:** Immunoaffinity chromatography

**Species Reactivity:** Human, mouse, and rat

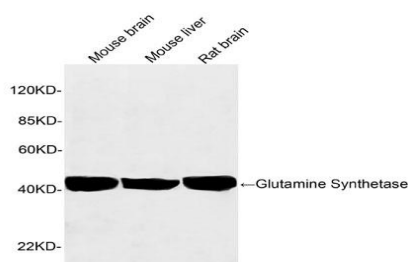
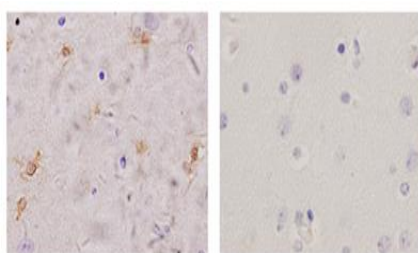
### Reconstitution:

Reconstitute the lyophilized powder with deionized water (or equivalent) to an antibody concentration of 0.5 mg/ml.

### Storage:

The antibody is stable in lyophilized form if stored at -20°C or below. The reconstituted antibody can be stored for 2-3 weeks at 2-8°C. For long term storage, aliquot and store at -20°C or below. Avoid repeated freezing and thawing cycles.

### Example



Immunohistochemistry analysis of human brain tissue slide (Paraffin embedded) using Rabbit Anti-Glutamine Synthetase Polyclonal Antibody (Left, GenScript, A01305) and Purified Rabbit IgG (Whole molecule) Control (Right, GenScript, A01008)

Western blot analysis of tissue lysates using 1 µg/ml Rabbit Anti-Glutamine Synthetase Polyclonal Antibody (GenScript, A01305)

The signal was developed with IRDye™ 800 Conjugated Goat Anti-Rabbit IgG.