

## DATASHEET

Version: 2016-08-17

## Glutamine Synthetase Antibody, pAb, Rabbit

**Cat. No.:** A01305-40**Size:** 40 µg**Synonyms:** Rabbit Anti Glutamine Synthetase pAb;**Description:**

Glutamine synthetase is an enzyme that plays an essential role in the metabolism of nitrogen by catalyzing the condensation of glutamate and ammonia to form glutamine. Glutamine synthetase activity is a useful marker for astrocytes and an important differentiation feature in retina. It is also considered to be a key enzyme in the recycling of the neurotransmitter glutamate.

GenScript **Rabbit Anti-Glutamine Synthetase Polyclonal Antibody** is developed in rabbit using a KLH-coupled synthetic peptide from within residues 300-350 of human Glutamine Synthetase protein (Swiss Prot: P15104).

**Immunogen:** KLH-coupled synthetic peptide from within residues 300-350 of Human Glutamine Synthetase protein (Swiss Prot: P15104).

**Host:** Rabbit**Antigen Synonyms:** Human**Conjugation:** Unconjugated**Formulation:**

0.5 mg/ml, lyophilized with PBS, pH 7.4, containing 0.02% sodium azide.

**Ig Subclass:** Rabbit IgG

**Specificity:** GenScript Rabbit Anti-Glutamine Synthetase Polyclonal Antibody detects endogenous levels of human, mouse and rat Glutamine Synthetase protein.

**Purification:** Immunoaffinity chromatography

**Applications:**

Working concentrations for specific applications should be determined by the investigator. The appropriate concentrations may be affected by secondary antibody affinity, antigen concentration, the sensitivity of the method of detection, temperature, the length of the incubations, and other factors. The suitability of this antibody for applications other than those listed below has not been determined. The following concentration ranges are recommended starting points for this product.

**ELISA:** 0.05-0.2 µg/ml

**Western blot:** 0.5-1 µg/ml

**Immunohistochemistry:** 5-10 µg/ml

**Other Applications:** user-optimized

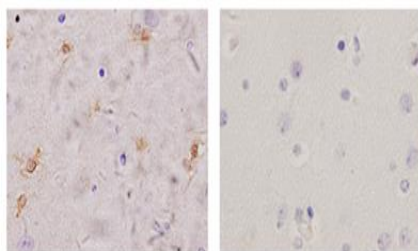
**Species Reactivity:** Human, mouse, and rat

**Reconstitution:**

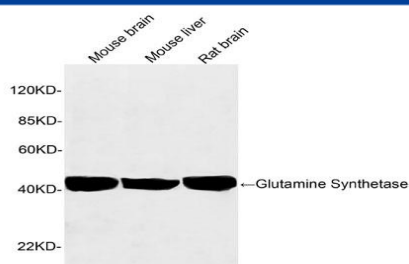
Reconstitute the lyophilized powder with deionized water (or equivalent) to an antibody concentration of 0.5 mg/ml.

**Storage:**

The antibody is stable in lyophilized form if stored at -20°C or below. The reconstituted antibody can be stored for 2-3 weeks at 2-8°C. For long term storage, aliquot and store at -20°C or below. Avoid repeated freezing and thawing cycles.

**Example**

Immunohistochemistry analysis of human brain tissue slide (Paraffin embedded) using Rabbit Anti-Glutamine Synthetase Polyclonal Antibody (Left, GenScript, A01305) and Purified Rabbit IgG (Whole molecule) Control (Right, GenScript, A01008)



Western blot analysis of tissue lysates using 1 µg/ml Rabbit Anti-Glutamine Synthetase Polyclonal Antibody (GenScript, A01305)

The signal was developed with IRDye™ 800 Conjugated Goat Anti-Rabbit IgG.