

DATASHEET

Version: 2016-08-17

NSE Antibody, pAb, Rabbit

Cat. No.: A01406-40

Size: 40 µg

Synonyms: Rabbit Anti-NSE pAb;

Description:

Enolase is glycolytic enzyme that catalyzes the conversion of 2-phosphoglycerate to phosphoenolpyruvate. Mammalian enolase has three subunits (alpha, beta, and gamma) that can form homo and heterodimers. Homodimers of gamma enolase are neuronal-specific. NSE (neuron specific enolase) is expressed primarily in neurons. It is also found in elevated levels in plasma in certain neoplasias including pediatric neuroblastoma and small cell lung cancer. NSE is widely used as a diagnostic marker in a variety of clinical assays.

GenScript **Rabbit Anti-NSE Polyclonal Antibody** is developed in rabbit using a KLH-coupled synthetic peptide from C-terminal of human NSE (Swiss Prot: P09104).

Immunogen: KLH-coupled synthetic peptide from C-terminal of human NSE (Swiss Prot: P09104)

Host: Rabbit

Antigen Synonyms: Human

Conjugation: Unconjugated

Formulation:

0.5 mg/ml, lyophilized with PBS, pH 7.4, containing 0.02% sodium azide

Ig Subclass: Rabbit IgG

Specificity: GenScript Rabbit Anti-NSE Polyclonal Antibody detects endogenous levels of human, mouse, and rat NSE

protein. It may cross-reacts with alpha and beta enolase according to sequence homology.

Purification: Immunoaffinity chromatography

Applications:

Working concentrations for specific applications should be determined by the investigator. The appropriate concentrations may be affected by secondary antibody affinity, antigen concentration, the sensitivity of the method of detection, temperature, the length of the incubations, and other factors. The suitability of this antibody for applications other than those listed below has not been determined. The following concentration ranges are recommended starting points for this product.

ELISA: 0.05-0.2 µg/ml

Western blot: 0.5-1 µg/ml

Immunoprecipitation (IP): 2-10 µg/mg of lysate

Immunohistochemistry: 5-10 µg/ml

Other Applications: user-optimized

Species Reactivity: Human, mouse, and rat. This product has not been tested with other species yet.

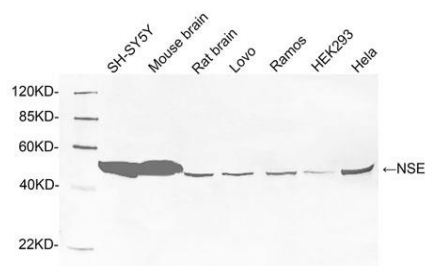
Reconstitution:

Reconstitute the lyophilized powder with deionized water (or equivalent) to an antibody concentration of 0.5 mg/ml.

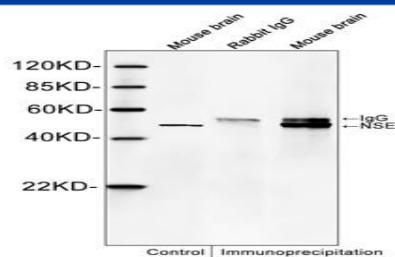
Storage:

The antibody is stable in lyophilized form if stored at -20°C or below. The reconstituted antibody can be stored for 2-3 weeks at 2-8°C. For long term storage, aliquot and store at -20°C or below. Avoid repeated freezing and thawing cycles.

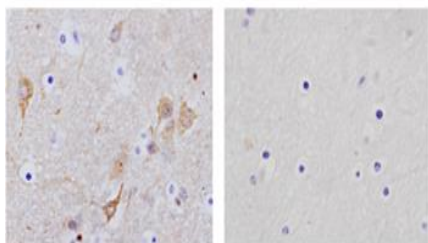
Example



Western blot analysis of tissue and cell lysates using 1 µg/ml Rabbit Anti-NSE Polyclonal Antibody (GenScript, A01406). The signal was developed with IRDye™800 Conjugated Goat Anti-Rabbit IgG.
Predicted Size: 47 KD
Observed Size: 47 KD



Western blot analysis of immunoprecipitates from mouse brain lysates. NSE was immunoprecipitated with Rabbit Anti-NSE Polyclonal Antibody (GenScript, A01406) and specificity was confirmed by immunoprecipitation with rabbit IgG. Western blot was performed using Rabbit Anti-NSE Polyclonal Antibody (GenScript, A01406).



Immunohistochemistry analysis of human brain tissue slide (Paraffin embedded) using Rabbit Anti-NSE Polyclonal Antibody (Left, GenScript, A01406) and Purified Rabbit IgG (Whole molecule) Control (Right, GenScript, A01008).