

DATASHEET

Version: 2016-08-17

Myelin Basic Protein Antibody, pAb, Rabbit

Cat. No.: A01407-40

Size: 40 µg

Synonyms: Rabbit Anti-Myelin Basic Protein pAb;

Description:

Myelin basic protein (MBP) participates in the process of myelination and has a role in both its formation and stabilization. Alternative splice combined with post-translational modifications give rise to a wide spectrum of isomers, with each of them potentially having a particular function. The MBP classic group isoforms (isoforms 4 to 14) are the most abundant protein components of the myelin membrane in CNS. MBP phosphorylation at threonine 125 modulates the contribution of MBP to the stability of the myelin sheath. Myelin basic protein serves as an oligodendrocyte marker in neuroscience study.

GenScript **Rabbit Anti-Myelin Basic Protein Polyclonal Antibody** is developed in rabbit using a KLH-coupled synthetic peptide from C-terminal of human Myelin Basic Protein (Swiss Prot: P02686).

Immunogen: KLH-coupled synthetic peptide from C-terminal of human Myelin Basic Protein (Swiss Prot: P02686).

Host: Rabbit

Antigen Synonyms: Human

Conjugation: Unconjugated

Formulation:

0.5 mg/ml, lyophilized with PBS, pH 7.4, containing 0.02% sodium azide

Ig Subclass: Rabbit IgG

Specificity: GenScript Rabbit Anti-Myelin Basic Protein Polyclonal Antibody detects endogenous levels of mouse and rat Myelin Basic Protein. It is predicted to react with human Myelin Basic Protein according to sequence homology.

Purification: Immunoaffinity chromatography

Applications:

Working concentrations for specific applications should be determined by the investigator. The appropriate concentrations may be affected by secondary antibody affinity, antigen concentration, the sensitivity of the method of detection, temperature, the length of the incubations, and other factors. The suitability of this antibody for applications other than those listed below has not been determined. The following concentration ranges are recommended starting points for this product.

ELISA: 0.05-0.2 µg/ml

Western blot: 0.5-1 µg/ml

Other Applications: user-optimized.

Species Reactivity: Mouse and rat. This product has not been tested with other species yet.

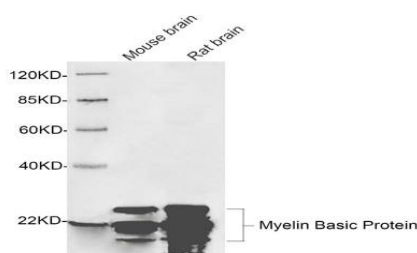
Reconstitution:

Reconstitute the lyophilized powder with deionized water (or equivalent) to an antibody concentration of 0.5 mg/ml.

Storage:

The antibody is stable in lyophilized form if stored at -20°C or below. The reconstituted antibody can be stored for 2-3 weeks at 2-8°C. For long term storage, aliquot and store at -20°C or below. Avoid repeated freezing and thawing cycles.

Example



Western blot analysis of tissue lysates using 1 µg/ml Rabbit Anti-Myelin Basic Protein Polyclonal Antibody (GenScript, A01407). The signal was developed with IRDye™ 800 Conjugated Goat Anti-Rabbit IgG.

Predicted Size: 14-33 KD

Observed Size: 14-33 KD

