

SNAP25 Antibody, pAb, Rabbit

Cat. No.: A01445-100

Size: 100 µg

Synonyms: Synaptosomal Associated Protein 25 antibody;

Description:

SNAP25 (Synaptosome-Associated Protein of 25 kDa) is a membrane bound, pre-synaptic nerve terminal protein that is involved in the molecular regulation of neurotransmitter release. It is part of the SNARE core complex containing SNAP25, VAMP2 and STX1A. SNAP25 plays an important role toward achieving synaptic function of specific neuronal systems and it associates with proteins involved in vesicle docking and membrane fusion. In addition, SNAP25 plays an essential role in synaptic vesicle fusion and exocytosis. GenScript **Rabbit Anti-SNAP25 Polyclonal Antibody** is developed in rabbit using Purified His-tagged human SNAP25 (Swiss Prot: Q5U0B5) full length recombinant protein.

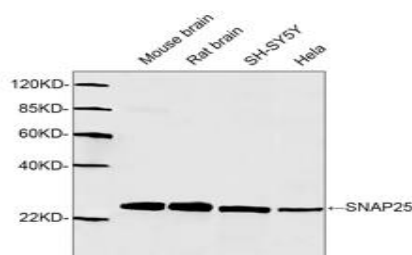
Immunogen: Purified His-tagged human SNAP25 (Swiss Prot: Q5U0B5) full length recombinant protein.

Host: Rabbit

Antigen Synonyms: Human

Conjugation: Unconjugated

Example



Formulation:

0.5 mg/ml, lyophilized with PBS, pH 7.4, containing 0.02% sodium azide

Ig Subclass: Rabbit IgG

Specificity: GenScript Rabbit Anti-SNAP25 Polyclonal Antibody detects endogenous levels of human, mouse, and rat SNAP25.

Positive Control: HeLa, SH-SY5Y, mouse brain and rat brain.

Purification: Immunoaffinity chromatography

Species Reactivity: Human, mouse, and rat. This product has not been tested for other species yet.

Reconstitution:

Reconstitute the lyophilized powder with deionized water (or equivalent) to an antibody concentration of 0.5 mg/ml.

Storage:

The antibody is stable in lyophilized form if stored at -20°C or below. The reconstituted antibody can be stored for 2-3 weeks at 2-8°C. For long term storage, aliquot and store at -20°C or below. Avoid repeated freezing and thawing cycles.

Western blot analysis of cell and tissue lysates using 1 µg/ml Rabbit Anti-SNAP25 Polyclonal Antibody (GenScript, A01445) The signal was developed with IRDye™ 800 Conjugated Goat Anti-Rabbit IgG.

Predicted Size: 25 KD

Observed Size: 25 KD