

DATASHEET

Version: 2016-08-17

H1N1 PB1 antibody, pAb, Rabbit

Cat. No.: A01467-40

Size: 40 µg

Synonyms: H1N1 Polymerase PB1 of Influenza A Virus Antibody;

Description:

Influenza A (H1N1) virus is a subtype of influenzavirus A and it is the most common cause of influenza (flu) in humans. A strain of swine-origin H1N1 was responsible for the 2009 flu pandemic. Influenza RNA-dependent RNA polymerase is composed of three subunits PB1, PA, and PB2. PB1 is the core of the complex and accounts for the polymerase activity. GenScript **H1N1 PB1 Antibody** is developed in rabbit using a KLH-coupled synthetic peptide from C-terminal of Influenza A (H1N1) 2009 virus PB1 protein (GenBank: CY040005).

Immunogen: KLH-coupled synthetic peptide from C-terminal of Influenza A (H1N1) 2009 virus PB1 protein (GenBank: CY040005).

Host: Rabbit

Antigen Synonyms: Influenza A

Conjugation: Unconjugated

Predicated Band Size:

115 KD

Observed Band Size:

115 KD

Formulation:

0.5 mg/ml, lyophilized with PBS, pH 7.4, containing 0.02%

sodium azide

Ig Subclass: Rabbit IgG

Specificity: GenScript **H1N1 PB1 Antibody** detects influenza A (H1N1) PB1 protein.

Purification: Immunoaffinity chromatography

Applications:

Working concentrations for specific applications should be determined by the investigator. The appropriate concentrations may be affected by secondary antibody affinity, antigen concentration, the sensitivity of the method of detection, temperature, the length of the incubations, and other factors. The suitability of this antibody for applications other than those listed below has not been determined. The following concentration ranges are recommended starting points for this product.

Western blot: 0.5-1 µg/ml.

Other Applications: user optimized.

Species Reactivity: Influenza A virus (H1N1)

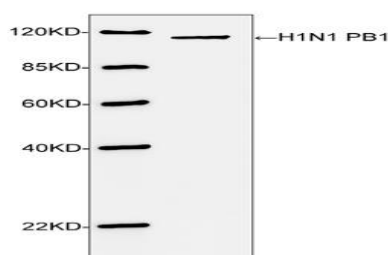
Reconstitution:

Reconstitute the lyophilized powder with deionized water (or equivalent) to an antibody concentration of 0.5 mg/ml.

Storage:

The antibody is stable in lyophilized form if stored at -20°C or below. The reconstituted antibody can be stored for 2-3 weeks at 2-8°C. For long term storage, aliquot and store at -20°C or below. Avoid repeated freezing and thawing cycles.

Example



Western blot analysis of H1N1 PB1 recombinant protein using **H1N1 PB1 antibody** (GenScript, A01467, 1 µg/ml). The signal was developed with IRDye™ 800 Conjugated Goat Anti-Rabbit IgG. Predicted Size: 115 KD. Observed Size: 115 KD.