

DATASHEET

Version: 2016-08-17

Annexin II Antibody, pAb, Rabbit

Cat. No.: A01471-40

Size: 40 µg

Synonyms: Annexin A2 antibody;

Description:

Annexin II is one member of the annexin family of calcium-dependent phospholipids binding proteins. It plays a role in the regulation of membrane and actin dynamics particularly in the endocytic pathway. A tyrosine phosphorylation switch in Annexin II triggers Rho/ROCK- dependent and actin-mediated changes in cell morphology associated with the control of cell adhesion. It may play roles in p53 induced apoptosis and it is also involved in regulation of cell proliferation. Annexin II is binding partner of SHP2 and the binding of SHP2 with Annexin II is affected by EGF stimulation, extracellular calcium levels, and the levels of HSP70.

GenScript **Rabbit Anti-Annexin II Polyclonal Antibody** is developed in rabbit using a KLH-coupled synthetic peptide within residues 180-230 of human Annexin II protein (Swiss Prot: P07355).

Immunogen: KLH-coupled synthetic peptide within residues 180-230 of human Annexin II protein (Swiss Prot: P07355).

Host: Rabbit

Antigen Synonyms: Human

Conjugation: Unconjugated

Formulation:

0.5 mg/ml, lyophilized with PBS, pH 7.4, containing 0.02% sodium azide.

Ig Subclass: Rabbit IgG

Specificity: GenScript Rabbit Anti-Annexin II Polyclonal Antibody detects endogenous levels of human Annexin II. Predicted to react with rat and mouse Annexin II according to sequence homology.

Positive Control: Hela and HepG2.

Purification: Immunoaffinity chromatography

Applications:

Working concentrations for specific applications should be determined by the investigator. The appropriate concentrations may be affected by secondary antibody affinity, antigen concentration, the sensitivity of the method of detection, temperature, the length of the incubations, and other factors. The suitability of this antibody for applications other than those listed below has not been determined. The following concentration ranges are recommended starting points for this product.

Western blot: 0.5-1 µg/ml

Flow cytometry: 1-3 µg for 1 x 10⁶ cells

Other applications: user-optimized

Species Reactivity: Human. Reactivity to other species is not tested yet.

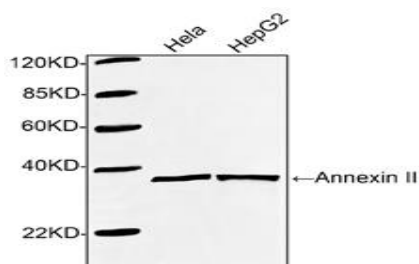
Reconstitution:

Reconstitute the lyophilized powder with deionized water (or equivalent) to an antibody concentration of 0.5 mg/ml.

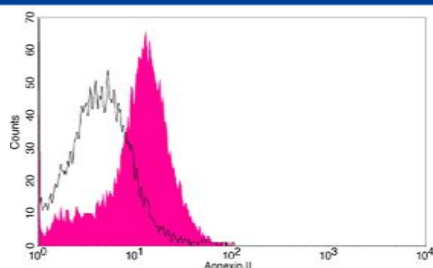
Storage:

The antibody is stable in lyophilized form if stored at -20°C or below. The reconstituted antibody can be stored for 2-3 weeks at 2-8°C. For long term storage, aliquot and store at -20°C or below. Avoid repeated freezing and thawing cycles.

Example



Western blot analysis of cell lysates using 1 µg/ml Rabbit Anti-Annexin II Polyclonal Antibody (GenScript, A01471). The signal was developed with IRDye™ 800 Conjugated Goat Anti-Rabbit IgG.
Predicted Size: 38 KD
Observed Size: 38 KD



Flow cytometric analysis of HepG2 cells using Annexin II Antibody, pAb, Rabbit (GenScript, A01471; shaded histogram) or with an isotype control antibody (GenScript, A01008; open histogram), followed by R-PE conjugated anti-rabbit IgG.