

IL-1 beta Antibody (7C10B9), mAb, Mouse

Cat. No.: A01487-40

Size: 40 µg

Synonyms: LAF antibody; H1 antibody

Description:

Interleukin 1 (IL1), originally known as lymphocyte activating factor (LAF), activates T cells and lymphocytes, which then proliferate and secrete interleukin 2. IL1 is primarily released from stimulated macrophages and monocytes, but also is released from several other cell types, and is thought to play a key role in inflammatory and immune responses. The two closely related agents, interleukin1 alpha (IL1 alpha) and interleukin1 beta (IL1 beta) bind to the same cell surface receptor, elicit nearly identical biological responses and share 25% homology in their amino acid sequence.

Immunogen: Human IL-1β full length recombinant protein

Host: Mouse

Conjugation: Unconjugated

Fusion Partner:

Spleen cells were fused with SP2/0-Ag14 mouse myeloma cells.

Formulation:

0.5 mg/ml, lyophilized with PBS, pH 7.4, containing 0.02% sodium azide

Clone: 7C10B9

Ig Subclass: Mouse IgG1,κ

Specificity: No cross-reactivity with IL-1α, IL-4, IL-6, IL-8, IL-18 are detected.

Purification: Protein A affinity column

Applications:

Working concentrations for specific applications should be determined by the investigator. The appropriate concentrations may be affected by secondary antibody affinity, antigen concentration, the sensitivity of the method of detection, temperature, the length of the incubations, and other factors. The suitability of this antibody for applications other than those listed below has not been determined. The following concentration ranges are recommended starting points for this product.

ELISA: 0.05-0.2 µg/ml.

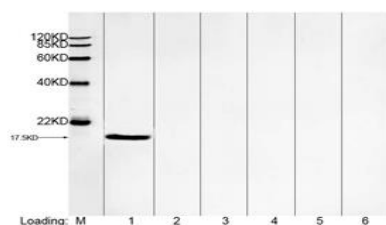
Reconstitution:

Reconstitute the lyophilized powder with deionized water (or equivalent) to an final concentration of 0.5 mg/ml.

Storage:

The antibody is stable in lyophilized form if stored at -20°C or below. The reconstituted antibody can be stored for 2-3 weeks at 2-8°C. For long term storage, aliquot and store at -20°C or below. Avoid repeated freezing and thawing cycles.

Example



Primary antibody

Western blot analysis of IL-1 beta Antibody (7C10B9), mAb, Mouse (GenScript, A01487, 1 µg/ml).

Secondary antibody:

IRDye™ 800 Conjugated affinity Purified Goat Anti-Mouse IgG (ROCKLAND, 1:10,000, 610-132-121)

Loading:

Lane 1: IL-1 β protein (400 ng)

Lane 2: IL-1 α protein (400 ng)

Lane 3: IL-4 protein (400 ng)

Lane 4: IL-6 protein (400 ng)

Lane 5: IL-8 protein (400 ng)

Lane 6: IL-18 protein (400 ng)

