

## DATASHEET

Version: 2016-08-17

### EEA1 antibody, pAb, Rabbit

**Cat. No.:** A01514-100

**Size:** 100 µg

**Synonyms:** Rabbit Anti-EEA1 polyclonal antibody ; Early endosome antigen 1 antibody

#### Description:

Early endosomal antigen 1 (EEA1) is an early endosomal marker which is essential for fusion between early endocytic vesicles. It interacts with Rab5, NSF and syntaxin 13 to promote early endosomal membrane docking and fusion. EEA1 protein contains an N-terminal zinc finger motif and a cyst-rich C-terminal metal-binding finger. A FYVE domain located at the carboxy terminus of EEA1 binds to phosphatidylinositol-3-phosphate (PtdIns(3)P), targeting EEA1 to early endosomes. GenScript Rabbit Anti-EEA1 Polyclonal Antibody is developed in rabbit using a KLH-coupled synthetic peptide from N-terminal of human EEA1 (Swiss Prot: Q15075).

**Immunogen:** KLH-coupled synthetic peptide from N-terminal of human EEA1 (Swiss Prot: Q15075).

**Host:** Rabbit

**Antigen Synonyms:** Human

**Conjugation:** Unconjugated

**Predicted Band Size:**

162 KD

**Observed Band Size:**

162 KD

**Formulation:**

0.5 mg/ml, lyophilized with PBS, pH 7.4, containing 0.02%

sodium azide.

**Ig Subclass:** Rabbit IgG

**Specificity:** GenScript Rabbit Anti-EEA1 Polyclonal Antibody detects endogenous levels of human, mouse and rat EEA1 protein.

**Purification:** Immunoaffinity chromatography

#### Applications:

Working concentrations for specific applications should be determined by the investigator. The appropriate concentrations may be affected by secondary antibody affinity, antigen concentration, the sensitivity of the method of detection, temperature, the length of the incubations, and other factors. The suitability of this antibody for applications other than those listed below has not been determined. The following concentration ranges are recommended starting points for this product.

**Western blot:** 1-2 µg/ml.

**Immunohistochemistry:** 5-10 µg/ml **Other Applications:** user optimized.

**Species Reactivity:** Human, mouse and rat

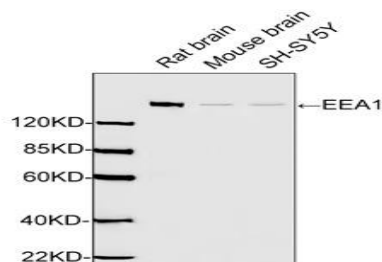
#### Reconstitution:

Reconstitute the lyophilized powder with deionized water (or equivalent) to an antibody concentration of 0.5 mg/ml.

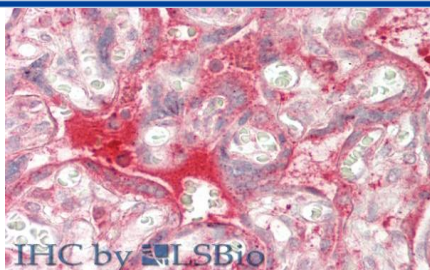
#### Storage:

The antibody is stable in lyophilized form if stored at -20°C or below. The reconstituted antibody can be stored for 2-3 weeks at 2-8°C. For long term storage, aliquot and store at -20°C or below. Avoid repeated freezing and thawing cycles.

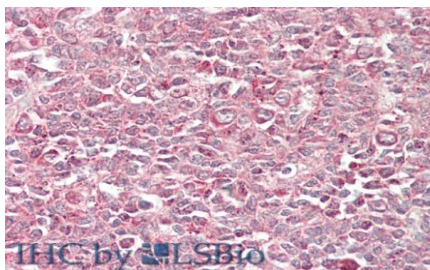
#### Example



Western blot analysis of cell and tissue lysates using Rabbit Anti-EEA1 Polyclonal Antibody (GenScript, A01514, 1 µg/ml) The signal was developed with IRDye™ 800 Conjugated Goat Anti-Rabbit IgG. Predicted Size: 162 KD Observed Size: 162 KD



Immunohistochemistry analysis of human placenta tissue slide (Paraffin embedded) using EEA1 antibody, pAb, Rabbit (GenScript, Cat.No. A01514, 10 µg/ml)



Immunohistochemistry analysis of human tonsil tissue slide (Paraffin embedded) using EEA1 antibody, pAb, Rabbit (GenScript, Cat.No. A01514, 10 µg/ml)