

DATASHEET

Version: 2016-08-17

PI3 Kinase p85 alpha antibody, pAb, Rabbit

Cat. No.: A01524-100

Size: 100 µg

Synonyms: p85 alpha antibody;

Description:

Phosphoinositide 3-kinase (PI3K) catalyzes the phosphatidylinositol-3,4,5-triphosphate by phosphorylating phosphatidylinositol (PI), phosphatidylinositol-4-phosphate (PIP), and phosphatidylinositol-4,5-bisphosphate (PIP2). PI3Ks are composed of a catalytic subunit (p110) and a regulatory subunit (p85). The catalytic subunits of PI3K include p110 alpha, p110 beta, p110 gamma, and p110 delta, while the regulatory subunits contain p85 alpha and p85 beta. p85 alpha regulates the catalytic activity of p110 subunit by binding to phosphorylated receptor tyrosine kinases (RTKs) through its SH2 domain. The p85 alpha has been implicated in insulin-stimulated increase in glucose uptake and glycogen synthesis in insulin-sensitive tissues. GenScript **PI3 Kinase p85 alpha Antibody** is developed in rabbit using a KLH-coupled synthetic peptide within residues 600–650 of human PI3 Kinase p85 alpha (Swiss Prot: P27986).

Immunogen: KLH-coupled synthetic peptide within residues 600-650 of human PI3 Kinase p85 alpha (Swiss Prot: P27986).

Host: Rabbit

Antigen Synonyms: Human

Conjugation: Unconjugated

Predicated Band Size:

85 KD

Observed Band Size:

85 KD

Formulation:

0.5 mg/ml, lyophilized with PBS, pH 7.4, containing 0.02% sodium azide.

Ig Subclass: Rabbit IgG

Specificity: GenScript **PI3 Kinase p85 alpha Antibody** detects endogenous levels of human PI3 Kinase p85 alpha. Predicted to react with mouse and rat PI3 Kinase p85 alpha according to sequence homology.

Positive Control: Ramos

Purification: Immunoaffinity chromatography

Species Reactivity: Human

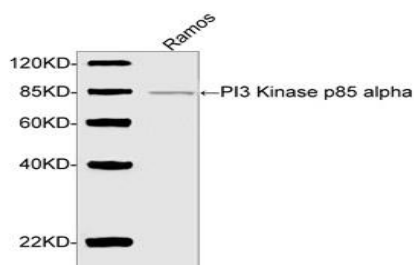
Reconstitution:

Reconstitute the lyophilized powder with deionized water (or equivalent) to an antibody concentration of 0.5 mg/ml.

Storage:

The antibody is stable in lyophilized form if stored at -20°C or below. The reconstituted antibody can be stored for 2-3 weeks at 2-8°C. For long term storage, aliquot and store at -20°C or below. Avoid repeated freezing and thawing cycles.

Example

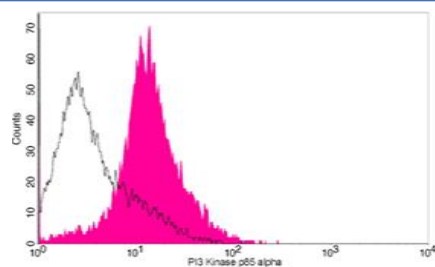


Western blot analysis of cell lysate using **PI3 Kinase p85 alpha Antibody** (GenScript, A01524, 2 µg/ml)

The signal was developed with IRDye™ 800 Conjugated Goat Anti-Rabbit IgG.

Predicted Size: 85 KD

Observed Size: 85 KD



Flow cytometric analysis of Ramos cells using PI3 Kinase p85 alpha antibody, pAb, Rabbit (GenScript, A01524; shaded histogram) or with an isotype control antibody (GenScript, A01008; open histogram), followed by R-PE conjugated anti-rabbit IgG.