

DATASHEET

Version: 2016-08-17

PI3 Kinase p85 alpha antibody, pAb, Rabbit**Cat. No.:** A01524-40**Size:** 40 µg**Synonyms:** p85 alpha antibody;**Description:**

Phosphoinositide 3-kinase (PI3K) catalyzes the phosphatidylinositol-3,4,5-triphosphate by phosphorylating phosphatidylinositol (PI), phosphatidylinositol-4-phosphate (PIP), and phosphatidylinositol-4,5-bisphosphate (PIP2). PI3Ks are composed of a catalytic subunit (p110) and a regulatory subunit (p85). The catalytic subunits of PI3K include p110 alpha, p110 beta, p110 gamma, and p110 delta, while the regulatory subunits contain p85 alpha and p85 beta. p85 alpha regulates the catalytic activity of p110 subunit by binding to phosphorylated receptor tyrosine kinases (RTKs) through its SH2 domain. The p85 alpha has been implicated in insulin-stimulated increase in glucose uptake and glycogen synthesis in insulin-sensitive tissues. GenScript **PI3 Kinase p85 alpha Antibody** is developed in rabbit using a KLH-coupled synthetic peptide within residues 600–650 of human PI3 Kinase p85 alpha (Swiss Prot: P27986).

Immunogen: KLH-coupled synthetic peptide within residues 600-650 of human PI3 Kinase p85 alpha (Swiss Prot: P27986).

Host: Rabbit**Antigen Synonyms:** Human**Conjugation:** Unconjugated**Predicated Band Size:**

85 KD

Observed Band Size:

85 KD

Formulation:**Example**

0.5 mg/ml, lyophilized with PBS, pH 7.4, containing 0.02% sodium azide.

Ig Subclass: Rabbit IgG

Specificity: GenScript **PI3 Kinase p85 alpha Antibody** detects endogenous levels of human PI3 Kinase p85 alpha. Predicted to react with mouse and rat PI3 Kinase p85 alpha according to sequence homology.

Positive Control: Ramos**Purification:** Immunoaffinity chromatography**Applications:**

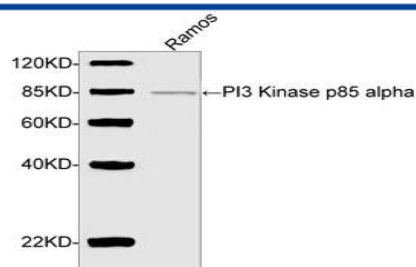
Working concentrations for specific applications should be determined by the investigator. The appropriate concentrations may be affected by secondary antibody affinity, antigen concentration, the sensitivity of the method of detection, temperature, the length of the incubations, and other factors. The suitability of this antibody for applications other than those listed below has not been determined. The following concentration ranges are recommended starting points for this product.

Western blot: 2-4 µg/ml**Flow cytometry:** 1-3 µg for 1 x 10⁶ cells**Other Applications:** user optimized**Species Reactivity:** Human**Reconstitution:**

Reconstitute the lyophilized powder with deionized water (or equivalent) to an antibody concentration of 0.5 mg/ml.

Storage:

The antibody is stable in lyophilized form if stored at -20°C or below. The reconstituted antibody can be stored for 2-3 weeks at 2-8°C. For long term storage, aliquot and store at -20°C or below. Avoid repeated freezing and thawing cycles.

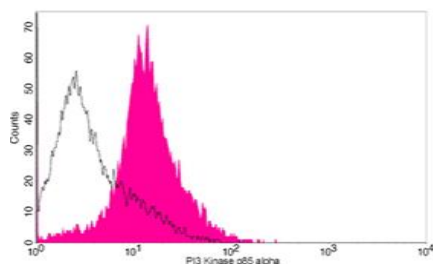


Western blot analysis of cell lysate using **PI3 Kinase p85 alpha Antibody** (GenScript, A01524, 2 µg/ml)

The signal was developed with IRDye™ 800 Conjugated Goat Anti-Rabbit IgG.

Predicted Size: 85 KD

Observed Size: 85 KD



Flow cytometric analysis of Ramos cells using PI3 Kinase p85 alpha antibody, pAb, Rabbit (GenScript, A01524; shaded histogram) or with an isotype control antibody (GenScript, A01008; open histogram), followed by R-PE conjugated anti-rabbit IgG.