

## DATASHEET

Version: 2016-08-17

### Human CT-1 Antibody (2H3G9), mAb, Mouse

**Cat. No.:** A01536-40

**Size:** 40 µg

**Synonyms:** Cardiotrophin-1 Antibody, mAb, Mouse; CTF1 Antibody, mAb, Mouse

#### Description:

Cardiotrophin-1 (CT-1) is a member of the cytokine family which also includes IL-6, IL-11, leukemia inhibitory factor (LIF), oncostatin M (OSM), and ciliary neurotrophic factor (CNTF). It was originally isolated based on its ability to induce cardiac myocyte hypertrophy *in vitro*. CT-1 has been shown to be a pleiotrophic cytokine exerting overlapping actions with other IL-6 family members on a variety of cell types. Human CT-1 encodes a 201 amino acid (aa) residue protein that lacks a hydrophobic signal peptide. CT-1 is expressed in high levels in heart, skeletal muscle, liver, lung, and kidney. Lower level of CT-1 expression is also seen in testis and brain. CT-1 initiates downstream signaling pathways through the heterodimerization of gp130 and the LIF receptor β subunit. A third α receptor subunit has recently been implicated in the receptor complex.

**GenScript Human CT-1 Antibody (2H3G9), mAb, Mouse** is produced from the hybridoma resulting from fusion of Sp2/0 myeloma and lymphocytes obtained from mouse immunized with purified full length human recombinant CT-1 protein (Swiss Prot: Q16619).

**Immunogen:** Purified full length human recombinant CT-1 protein (Swiss Prot: Q16619)

**Host:** Mouse

**Antigen Synonyms:** Human

**Conjugation:** Unconjugated

#### Fusion Partner:

Spleen cells were fused with SP2/0-Ag14 mouse myeloma cells

#### Formulation:

0.5 mg/ml, lyophilized with PBS, pH 7.4, containing 0.02% sodium azide

**Clone:** 2H3G9

**Ig Subclass:** IgG1, κ

**Specificity:** No cross-reactivity with other proteins detected.

**Purification:** Protein A affinity column

#### Applications:

**Western Blot:** 0.5–1.0 µg/ml

**Other Applications:** user-optimized

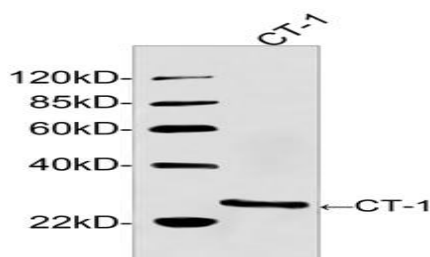
#### Reconstitution:

Reconstitute the lyophilized powder with deionized water (or equivalent) to an final concentration of 0.5 mg/ml.

#### Storage:

The antibody is stable in lyophilized form if stored at -20°C or below. The reconstituted antibody can be stored for 2-3 weeks at 2-8°C. For long term storage, aliquot and store at -20°C or below. Avoid repeated freezing and thawing cycles.

#### Example



Western blot analysis of human recombinant CT-1 fusion protein using Human CT-1 Antibody (2H3G9), mAb, Mouse (GenScript, A01536, 1 µg/ml)

The signal was developed with IRDye™ 800 Conjugated Goat Anti-Mouse IgG.

Predicted Size: 32 KD

Observed Size: 32 KD