

DATASHEET

Version: 2016-08-17

IP-10 Antibody (1H7D6), mAb, Mouse**Cat. No.:** A01563-40**Size:** 40 µg**Synonyms:** IP-10 Antibody, mAb, Mouse;**Description:**

Interferon-gamma-inducible 10 kD protein (IP10) is a CXC chemokine with chemoattractant properties for CD4-positive T cells and inhibits early normal and leukemic hemopoietic progenitor proliferation. IP10 is produced by a wide variety of cell types ranging from neutrophils and monocytes to hepatocytes, endothelial cells, and keratinocytes. The cytokine is reported to be involved in a scale of inflammatory pathologies such as HIV encephalitis, cutaneous T cell lymphoma, chronic hepatitis and acute anterior uveitis. Various observations strongly suggest a role for the CXC chemokines IL-8 and IP10 to regulate angiogenic activity in cancer and in idiopathic pulmonary fibrosis.

GenScript **IP10 Antibody, mAb, Mouse** is produced from the hybridoma resulting from fusion of Sp2/0 myeloma and lymphocytes obtained from mouse immunized with purified recombinant human protein IP10 (Swiss-Prot P02778).

Immunogen: Purified recombinant human protein IP10 (Swiss-Prot: P02778)

Host: Mouse**Antigen Synonyms:** Human**Conjugation:** Unconjugated**Fusion Partner:**

Spleen cells were fused with SP2/0-Ag14 mouse myeloma cells.

Predicated Band Size:

32 KD

Observed Band Size:

32 KD

Formulation:

0.5 mg/ml, lyophilized with PBS, pH 7.4, containing 0.02%

sodium azide

Clone: 1H7D6**Ig Subclass:** IgG2b,k

Specificity: GenScript **IP10 Antibody, mAb, Mouse** detects human IP10

Purification: Protein A affinity column**Applications:**

Working concentrations for specific applications should be determined by the investigator. The appropriate concentrations may be affected by secondary antibody affinity, antigen concentration, the sensitivity of the method of detection, temperature, the length of the incubations, and other factors. The suitability of this antibody for applications other than those listed below has not been determined. The following concentration ranges are recommended starting points for this product.

Western blot: 0.1-1.0 µg/ml.**ELISA:** 0.1-1.0 µg/ml

Recommended pair for sandwich immunoassay:

Capture: A01563, Clone # 1H7D6**Detection:** A01561, Clone # 1G12E6; A01562, Clone # 2H11E8; A01564, Clone # 1G8E2;

Immunohistochemistry: 10-20 µg/ml **Other Applications:**
User optimized

Species Reactivity: Human. This product has not been test with other species yet.

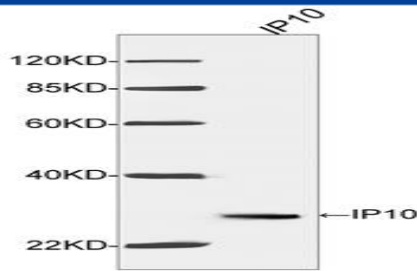
Reconstitution:

Reconstitute the lyophilized powder with deionized water (or equivalent) to an antibody concentration of 0.5 mg/ml.

Storage:

The antibody is stable in lyophilized form if stored at -20°C or below. The reconstituted antibody can be stored for 2-3 weeks at 2-8°C. For long term storage, aliquot and store at -20°C or below. Avoid repeated freezing and thawing cycles.

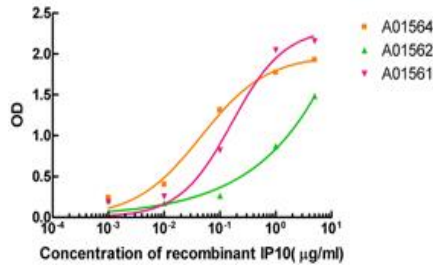
Example



Western blot analysis of recombinant human IP10 fusion protein using IP10 Antibody, mAb, Mouse (GenScript, A01563, 1 μ g/ml). The signal was developed with IRDye™ 800 Conjugated Goat Anti-Mouse IgG.

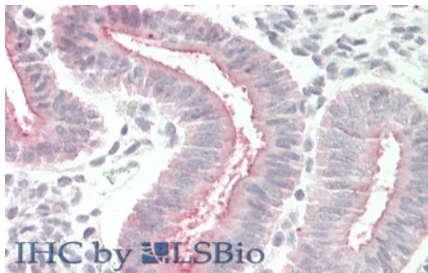
Predicted Size: 32 KD

Observed Size: 32 KD



Sandwich ELISA analysis of matched antibody pairs using IP10 Antibody, mAb, Mouse

1. ELISA plate was coated with Human IP10 Antibody, mAb, Mouse (Cat. No. A01563)
2. Recombinant IP10 at appropriate dilution were added into appropriate reaction wells.
3. After a period of incubation, HRP conjugated Human IP10 Antibody, mAb, Mouse (Cat. No. A01561 or A01562 or A01564) was added followed by proper period of incubation.
4. TMB substrate was added and developed at room temperature.
5. Stop the reaction with 1.0 N HCl and read the plate at 450nm.



Immunohistochemistry analysis of human uterus tissue slide (Paraffin embedded) using IP-10 Antibody (1H7D6), mAb, Mouse (GenScript, Cat.No. A01563, 15 μ g/ml)