

DATASHEET

Version: 2016-08-17

E-Cadherin antibody, pAb, Rabbit

Cat. No.: A01589-40

Size: 40 µg

Synonyms: Cadherin 1 antibody; CD324 antigen antibody

Description:

E-Cadherin is a key cell adhesion molecule located at adherens junctions (AJs) and undergoes endocytosis when AJs are disrupted by the action of extracellular signals. It is a member of cadherin family that includes cadhesin repeats of approximately 100 residues in their extracellular domain. E-Cadherin plays a crucial role in the maintenance of the epithelial junctional complex and is an important molecule in maintaining epithelial integrity. The expression of E-Cadherin might be associated with the invasive potential of epithelial neoplasms. Defects in E-Cadherin are a cause of gastric cancer, also known as hereditary familial diffuse gastric cancer (HDGC).

GenScript E-Cadherin Antibody is developed in rabbit using a KLH-coupled synthetic peptide within residues 650–700 of human E-Cadherin (Swiss Prot: P12830).

Immunogen: KLH-coupled synthetic peptide within residues 650–700 of human E-Cadherin (Swiss Prot: P12830)

Host: Rabbit

Antigen Synonyms: Human

Conjugation: Unconjugated

Formulation:

0.5 mg/ml, lyophilized with PBS, pH 7.4, containing 0.02% sodium azide

Ig Subclass: Rabbit IgG

Specificity: GenScript E-Cadherin Antibody detects human and mouse endogenous levels of E-Cadherin. It is predicted to react with rat E-Cadherin protein according to sequence homology.

Positive Control: HepG2 and NIH/3T3

Purification: Immunoaffinity chromatography

Applications:

Working concentrations for specific applications should be determined by the investigator. The appropriate concentrations may be affected by secondary antibody affinity, antigen concentration, the sensitivity of the method of detection, temperature, the length of the incubations, and other factors. The suitability of this antibody for applications other than those listed below has not been determined. The following concentration ranges are recommended starting points for this product.

Western blot: 0.5–1 µg/ml

Flow cytometry: 1–3 µg for 1 x 10⁶ cells

Other Applications: user-optimized

Species Reactivity: Human and mouse

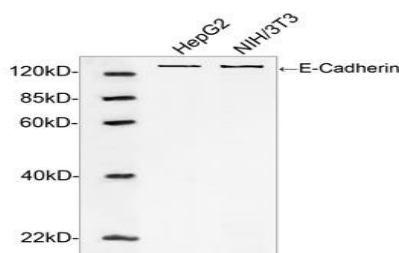
Reconstitution:

Reconstitute the lyophilized powder with deionized water (or equivalent) to an antibody concentration of 0.5 mg/ml.

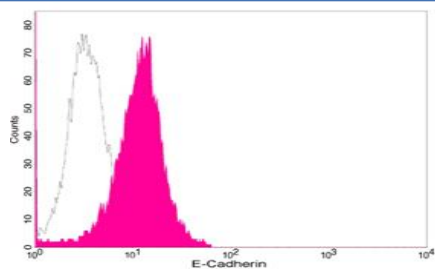
Storage:

The antibody is stable in lyophilized form if stored at -20°C or below. The reconstituted antibody can be stored for 2–3 weeks at 2–8°C. For long term storage, aliquot and store at -20°C or below. Avoid repeated freezing and thawing cycles.

Example



Western blot analysis of cell lysates using E-Cadherin Antibody (GenScript, A01589, 1 µg/ml). The signal was developed with IRDye™ 800 Conjugated Goat Anti-Rabbit IgG. Predicted Size: 97 KD
Observed Size: 130 KD



Flow cytometric analysis of HEK293 cells using E-Cadherin Antibody (GenScript, A01589; shaded histogram) or with an isotype control antibody (GenScript, A01008; open histogram), followed by R-PE conjugated anti-rabbit IgG.