

DATASHEET

Version: 2016-08-17

SSTR2 antibody, pAb, Rabbit

Cat. No.: A01591-100

Size: 100 µg

Synonyms: SS2R Antibody;

Description:

Somatostatin receptor type 2 (SSTR2) is a receptor for somatostatins-14 and -28. This receptor is coupled via pertussis toxin sensitive G proteins to incur inhibition of adenylyl cyclase. In addition, it stimulates phosphotyrosine phosphatase and PLC via pertussis toxin insensitive as well as sensitive G proteins. In RIN-5F cells, this receptor inhibits calcium entry by suppressing voltage dependent calcium-channels.

GenScript SSTR2 Antibody is developed in rabbit using a KLH-coupled synthetic peptide within residues 130–180 of human SSTR2 (Swiss Prot: P30874).

Immunogen: KLH-coupled synthetic peptide within residues 130-180 of human SSTR2 (Swiss Prot: P30874)

Host: Rabbit

Antigen Synonyms: Human

Conjugation: Unconjugated

Predicted Band Size:

41 KD

Observed Band Size:

55 KD

Formulation:

0.5 mg/ml, lyophilized with PBS, pH 7.4, containing 0.02% sodium azide

Ig Subclass: Rabbit IgG

Specificity: GenScript Rabbit SSTR2 Antibody detects human endogenous levels of SSTR2. It is predicted to react with mouse and rat SSTR2 protein according to sequence homology.

Positive Control: A549 and MCF-7

Purification: Immunoaffinity chromatography

Species Reactivity: Human

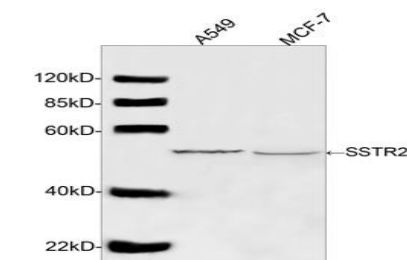
Reconstitution:

Reconstitute the lyophilized powder with deionized water (or equivalent) to an antibody concentration of 0.5 mg/ml.

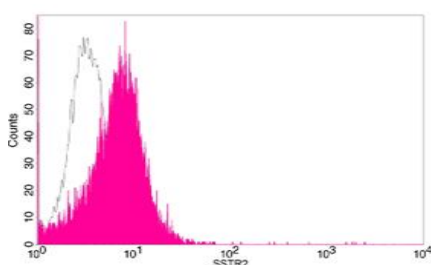
Storage:

The antibody is stable in lyophilized form if stored at -20°C or below. The reconstituted antibody can be stored for 2-3 weeks at 2-8°C. For long term storage, aliquot and store at -20°C or below. Avoid repeated freezing and thawing cycles.

Example



Western blot analysis of cell lysates using SSTR2 Antibody (GenScript, A01591, 1 µg/ml). The signal was developed with IRDye™ 800 Conjugated Goat Anti-Rabbit IgG. Predicted Size: 41 KD. Observed Size: 55 KD.



Flow cytometric analysis of Romas cells using SSTR2 antibody, pAb, Rabbit (GenScript, A01591; shaded histogram) or with an isotype control antibody (GenScript, A01008; open histogram), followed by R-PE conjugated anti-rabbit IgG.

