

## DATASHEET

Version: 2016-08-17

### SSTR2 antibody, pAb, Rabbit

**Cat. No.:** A01591-40

**Size:** 40 µg

**Synonyms:** SS2R Antibody;

#### Description:

Somatostatin receptor type 2 (SSTR2) is a receptor for somatostatins-14 and -28. This receptor is coupled via pertussis toxin sensitive G proteins to incur inhibition of adenylyl cyclase. In addition, it stimulates phosphotyrosine phosphatase and PLC via pertussis toxin insensitive as well as sensitive G proteins. In RIN-5F cells, this receptor inhibits calcium entry by suppressing voltage dependent calcium-channels.

**GenScript SSTR2 Antibody** is developed in rabbit using a KLH-coupled synthetic peptide within residues 130–180 of human SSTR2 (Swiss Prot: P30874).

**Immunogen:** KLH-coupled synthetic peptide within residues 130-180 of human SSTR2 (Swiss Prot: P30874)

**Host:** Rabbit

**Antigen Synonyms:** Human

**Conjugation:** Unconjugated

#### Predicated Band Size:

41 KD

#### Observed Band Size:

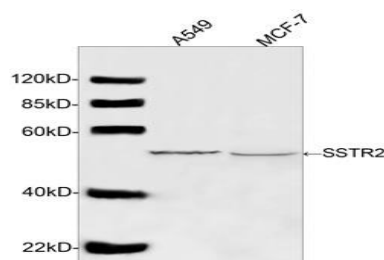
55 KD

#### Formulation:

0.5 mg/ml, lyophilized with PBS, pH 7.4, containing 0.02% sodium azide

**Ig Subclass:** Rabbit IgG

#### Example



**Specificity:** GenScript Rabbit SSTR2 Antibody detects human endogenous levels of SSTR2. It is predicted to react with mouse and rat SSTR2 protein according to sequence homology.

**Positive Control:** A549 and MCF-7

**Purification:** Immunoaffinity chromatography

#### Applications:

Working concentrations for specific applications should be determined by the investigator. The appropriate concentrations may be affected by secondary antibody affinity, antigen concentration, the sensitivity of the method of detection, temperature, the length of the incubations, and other factors. The suitability of this antibody for applications other than those listed below has not been determined. The following concentration ranges are recommended starting points for this product.

**Western blot:** 0.5-1 µg/ml

**Flow cytometry:** 1-3 µg for 1 x 10<sup>6</sup> cells

**Other applications:** user-optimized

**Species Reactivity:** Human

#### Reconstitution:

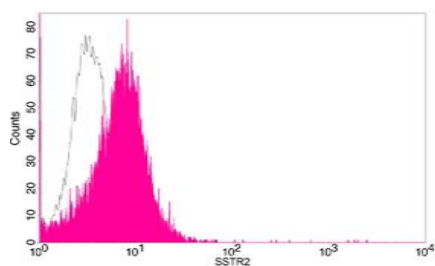
Reconstitute the lyophilized powder with deionized water (or equivalent) to an antibody concentration of 0.5 mg/ml.

#### Storage:

The antibody is stable in lyophilized form if stored at -20°C or below. The reconstituted antibody can be stored for 2-3 weeks at 2-8°C. For long term storage, aliquot and store at -20°C or below. Avoid repeated freezing and thawing cycles.

Western blot analysis of cell lysates using SSTR2 Antibody (GenScript, A01591, 1 µg/ml)  
The signal was developed with IRDye™ 800 Conjugated Goat Anti-Rabbit IgG.  
Predicted Size: 41 KD  
Observed Size: 55 KD





Flow cytometric analysis of Romas cells using SSTR2 antibody, pAb, Rabbit (GenScript, A01591; shaded histogram) or with an isotype control antibody (GenScript, A01008; open histogram), followed by R-PE conjugated anti-rabbit IgG.