

**DATASHEET**

Version: 2016-08-17

**BRCA2 antibody, pAb, Rabbit****Cat. No.:** A01594-100**Size:** 100 µg**Synonyms:** FACD antibody;**Description:**

Breast cancer type 2 susceptibility protein (BRCA2) is involved in double-strand break repair and/or homologous recombination. It may participate in S phase checkpoint activation. In addition, It interacts with RAD51 and DSS1 and binds to ubiquitinated FANCD2. It also interacts with PALB2, enabling the recombinational repair and checkpoints functions. Defects in BRCA2 can cause genetic susceptibility to breast cancer (BC), also called susceptibility to familial breast-ovarian cancer type 2 (BROVCA2).

**GenScript BRCA2 Antibody** is developed in rabbit using a KLH-coupled synthetic peptide within residues 2480–2530 of human BRCA2 (Swiss Prot: P51587).

**Immunogen:** KLH-coupled synthetic peptide within residues 2480–2530 of human BRCA2 (Swiss Prot: P51587)

**Host:** Rabbit**Antigen Synonyms:** Human**Conjugation:** Unconjugated**Predicated Band Size:**

390 KD

**Observed Band Size:**

390 KD

**Formulation:**

0.5 mg/ml, lyophilized with PBS, pH 7.4, containing 0.02% sodium azide.

**Ig Subclass:** Rabbit IgG

**Specificity:** GenScript BRCA2 Antibody detects endogenous levels of human and mouse BRCA2.

**Positive Control:** HEK293 and Mouse brain

**Purification:** Immunoaffinity chromatography.

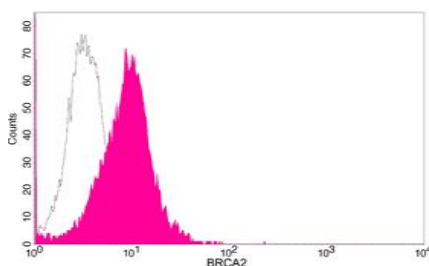
**Species Reactivity:** Mouse

**Reconstitution:**

Reconstitute the lyophilized powder with deionized water (or equivalent) to an antibody concentration of 0.5 mg/ml.

**Storage:**

The antibody is stable in lyophilized form if stored at -20°C or below. The reconstituted antibody can be stored for 2-3 weeks at 2-8°C. For long term storage, aliquot and store at -20°C or below. Avoid repeated freezing and thawing cycles.

**Example**

Flow cytometric analysis of HEK293 cells using BRCA2 antibody, pAb, Rabbit (GenScript, A01594; shaded histogram) <BR>or with an isotype control antibody (GenScript, A01008; open histogram), followed by R-PE conjugated anti-rabbit IgG.