

DATASHEET

Version: 2016-08-17

BRCA2 antibody, pAb, Rabbit

Cat. No.: A01594-40

Size: 40 µg

Synonyms: FACD antibody;

Description:

Breast cancer type 2 susceptibility protein (BRCA2) is involved in double-strand break repair and/or homologous recombination. It may participate in S phase checkpoint activation. In addition, It interacts with RAD51 and DSS1 and binds to ubiquitinated FANCD2. It also interacts with PALB2, enabling the recombinational repair and checkpoints functions. Defects in BRCA2 can cause genetic susceptibility to breast cancer (BC), also called susceptibility to familial breast-ovarian cancer type 2 (BROVCA2).

GenScript BRCA2 Antibody is developed in rabbit using a KLH-coupled synthetic peptide within residues 2480–2530 of human BRCA2 (Swiss Prot: P51587).

Immunogen: KLH-coupled synthetic peptide within residues 2480–2530 of human BRCA2 (Swiss Prot: P51587)

Host: Rabbit

Antigen Synonyms: Human

Conjugation: Unconjugated

Predicated Band Size:

390 KD

Observed Band Size:

390 KD

Formulation:

0.5 mg/ml, lyophilized with PBS, pH 7.4, containing 0.02%

sodium azide.

Ig Subclass: Rabbit IgG

Specificity: GenScript BRCA2 Antibody detects endogenous levels of human and mouse BRCA2.

Positive Control: HEK293 and Mouse brain

Purification: Immunoaffinity chromatography.

Applications:

Working concentrations for specific applications should be determined by the investigator. The appropriate concentrations may be affected by secondary antibody affinity, antigen concentration, the sensitivity of the method of detection, temperature, the length of the incubations, and other factors. The suitability of this antibody for applications other than those listed below has not been determined. The following concentration ranges are recommended starting points for this product.

Western blot: 0.5-1 µg/ml

Flow cytometry: 1-3 µg for 1 x 10⁶ cells

Other applications: user optimized

Species Reactivity: Mouse

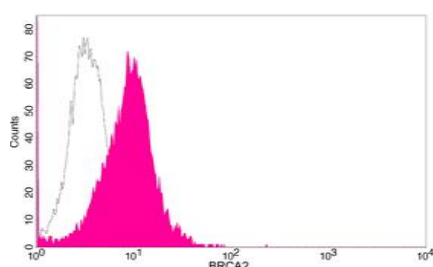
Reconstitution:

Reconstitute the lyophilized powder with deionized water (or equivalent) to an antibody concentration of 0.5 mg/ml.

Storage:

The antibody is stable in lyophilized form if stored at -20°C or below. The reconstituted antibody can be stored for 2-3 weeks at 2-8°C. For long term storage, aliquot and store at -20°C or below. Avoid repeated freezing and thawing cycles.

Example



Flow cytometric analysis of HEK293 cells using BRCA2 antibody, pAb, Rabbit (GenScript, A01594; shaded histogram)
or with an isotype control antibody (GenScript, A01008; open histogram), followed by R-PE conjugated anti-rabbit IgG.