

## DATASHEET

Version: 2016-08-17

### SCF antibody, pAb, Rabbit

**Cat. No.:** A01596-100

**Size:** 100 µg

**Synonyms:** SCF Antibody;

#### Description:

Stem cell factor (SCF) is a growth factor that is essential for hematopoiesis, melanogenesis, and fertility. It exerts its activity at the early stages of hematopoiesis. Specifically, SCF stimulates the proliferation of mast cell and mediates cell to cell adhesion and acts synergistically with other cytokines, probably interleukins. In addition, SCF induces dimerization of c-Kit followed by trans-autophosphorylation of the cytoplasmic protein tyrosine kinase domain, leading to subsequent recruitment of signaling proteins, tyrosine phosphorylation of substrates, and activation of multiple signaling pathways.

**GenScript SCF Antibody** is developed in rabbit using a KLH-coupled synthetic peptide from N-terminal of human SCF (Swiss Prot: P21583).

**Immunogen:** KLH-coupled synthetic peptide from N-terminal of human SCF (Swiss Prot: P21583)

**Host:** Rabbit

**Antigen Synonyms:** Human

**Conjugation:** Unconjugated

**Predicated Band Size:**

33 KD

#### Observed Band Size:

33 KD

#### Formulation:

0.5 mg/ml, lyophilized with PBS, pH 7.4, containing 0.02% sodium azide

**Ig Subclass:** Rabbit IgG

**Specificity:** GenScript SCF Antibody detects endogenous levels of human and mouse SCF. It is predicted to react with rat SCF protein according to sequence homology.

**Positive Control:** Ramos cell, mouse kidney tissue lysate

**Purification:** Immunoaffinity chromatography

**Species Reactivity:** Human and mouse

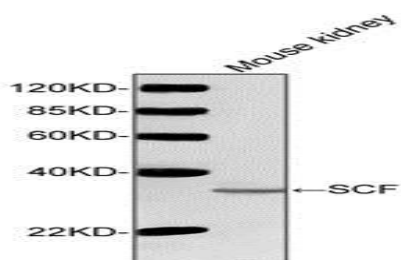
#### Reconstitution:

Reconstitute the lyophilized powder with deionized water (or equivalent) to an antibody concentration of 0.5 mg/ml.

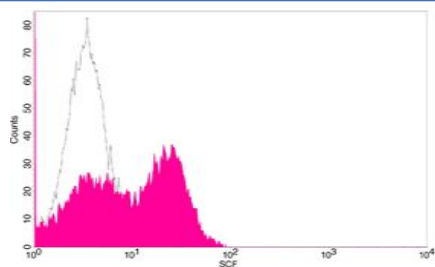
#### Storage:

The antibody is stable in lyophilized form if stored at -20°C or below. The reconstituted antibody can be stored for 2-3 weeks at 2-8°C. For long term storage, aliquot and store at -20°C or below. Avoid repeated freezing and thawing cycles.

#### Example



Western blot analysis of tissue lysates using SCF Antibody (GenScript, A01596, 1 µg/ml)  
The signal was developed with IRDye™ 800 Conjugated Goat Anti-Rabbit IgG.  
Predicted Size: 33 KD  
Observed Size: 33 KD



Flow cytometric analysis of Ramos cells using SCF Antibody (GenScript, A01596; shaded histogram) or with an isotype control antibody (GenScript, A01008; open histogram), followed by R-PE conjugated anti-rabbit IgG.