

DATASHEET

Version: 2016-08-17

SCF antibody, pAb, Rabbit

Cat. No.: A01596-40

Size: 40 µg

Synonyms: SCF Antibody;

Description:

Stem cell factor (SCF) is a growth factor that is essential for hematopoiesis, melanogenesis, and fertility. It exerts its activity at the early stages of hematopoiesis. Specifically, SCF stimulates the proliferation of mast cell and mediates cell to cell adhesion and acts synergistically with other cytokines, probably interleukins. In addition, SCF induces dimerization of c-Kit followed by trans-autophosphorylation of the cytoplasmic protein tyrosine kinase domain, leading to subsequent recruitment of signaling proteins, tyrosine phosphorylation of substrates, and activation of multiple signaling pathways.

GenScript SCF Antibody is developed in rabbit using a KLH-coupled synthetic peptide from N-terminal of human SCF (Swiss Prot: P21583).

Immunogen: KLH-coupled synthetic peptide from N-terminal of human SCF (Swiss Prot: P21583)

Host: Rabbit

Antigen Synonyms: Human

Conjugation: Unconjugated

Predicated Band Size:

33 KD

Observed Band Size:

33 KD

Formulation:

0.5 mg/ml, lyophilized with PBS, pH 7.4, containing 0.02%

sodium azide

Ig Subclass: Rabbit IgG

Specificity: GenScript SCF Antibody detects endogenous levels of human and mouse SCF. It is predicted to react with rat SCF protein according to sequence homology.

Positive Control: Ramos cell, mouse kidney tissue lysate

Purification: Immunoaffinity chromatography

Applications:

Working concentrations for specific applications should be determined by the investigator. The appropriate concentrations may be affected by secondary antibody affinity, antigen concentration, the sensitivity of the method of detection, temperature, the length of the incubations, and other factors. The suitability of this antibody for applications other than those listed below has not been determined. The following concentration ranges are recommended starting points for this product.

Western blot: 0.5-1 µg/ml

Flow cytometry: 1-3 µg for 1 x 10⁶ cells

Other applications: user optimized

Species Reactivity: Human and mouse

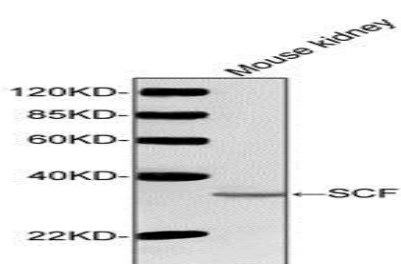
Reconstitution:

Reconstitute the lyophilized powder with deionized water (or equivalent) to an antibody concentration of 0.5 mg/ml.

Storage:

The antibody is stable in lyophilized form if stored at -20°C or below. The reconstituted antibody can be stored for 2-3 weeks at 2-8°C. For long term storage, aliquot and store at -20°C or below. Avoid repeated freezing and thawing cycles.

Example

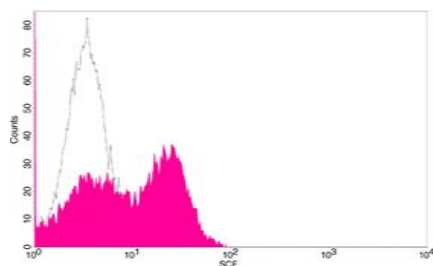


Western blot analysis of tissue lysates using SCF Antibody (GenScript, A01596, 1 µg/ml)

The signal was developed with IRDye™ 800 Conjugated Goat Anti-Rabbit IgG.

Predicted Size: 33 KD

Observed Size: 33 KD



Flow cytometric analysis of Ramos cells using SCF Antibody (GenScript, A01596; shaded histogram) or with an isotype control antibody (GenScript, A01008; open histogram), followed by R-PE conjugated anti-rabbit IgG.