

DATASHEET

Version: 2016-08-17

cPLA2 Antibody, pAb, Rabbit

Cat. No.: A01631-40

Size: 40 µg

Synonyms: Cytosolic phospholipase A2 antibody, pAb, Rabbit;

Description:

Cytosolic phospholipase A2 (cPLA2) catalyzes the hydrolysis of the sn-2 acyl bond of glycerolipids to produce lysophospholipids and release arachidonic acid. cPLA2 has been implicated in mitogenesis, differentiation, inflammation, and cytotoxicity. Its catalytic activity is stimulated via phosphorylation of cPLA2 at Ser505 and Ser727. cPLA2 is expressed in various tissues such as macrophages, platelets, neutrophils, fibroblasts, and lung endothelium.

GenScript **cPLA2 Antibody, pAb, Rabbit** is developed in rabbit using a KLH-coupled synthetic peptide from C-terminal of human cPLA2 (Swiss Prot: P47712).

Immunogen: KLH-coupled synthetic peptide from C-terminal of human cPLA2 (Swiss Prot: P47712)

Host: Rabbit

Antigen Synonyms: Human

Conjugation: Unconjugated

Predicated Band Size:

85 KD

Observed Band Size:

65 KD

Formulation:

0.5 mg/ml, lyophilized with PBS, pH 7.4, containing 0.02% sodium azide

Ig Subclass: Rabbit IgG

Specificity: GenScript **cPLA2 Antibody, pAb, Rabbit** detects endogenous levels of mouse cPLA2. It is predicted to react with human and rat cPLA2 according to sequence homology.

Positive Control: Mouse heart

Purification: Immunoaffinity chromatography

Applications:

Working concentrations for specific applications should be determined by the investigator. The appropriate concentrations may be affected by secondary antibody affinity, antigen concentration, the sensitivity of the method of detection, temperature, the length of the incubations, and other factors. The suitability of this antibody for applications other than those listed below has not been determined. The following concentration ranges are recommended starting points for this product.

Western blot: 0.5-1 µg/ml

Other Applications: User optimized

Species Reactivity: Mouse

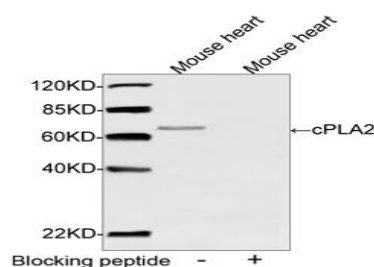
Reconstitution:

Reconstitute the lyophilized powder with deionized water (or equivalent) to an antibody concentration of 0.5 mg/ml.

Storage:

The antibody is stable in lyophilized form if stored at -20°C or below. The reconstituted antibody can be stored for 2-3 weeks at 2-8°C. For long term storage, aliquot and store at -20°C or below. Avoid repeated freezing and thawing cycles.

Example



Western blot analysis of tissue lysates using cPLA2 Antibody, pAb, Rabbit (GenScript, A01631, 1 µg/ml). The signal was developed with IRDye™ 800 Conjugated Goat Anti-Rabbit IgG.

Predicted Size: 85 KD

Observed Size: 65 KD

