

DATASHEET

Version: 2016-08-17

RNA Polymerase II CTD Repeat Antibody (Phospho-Ser⁵), pAb, Rabbit**Cat. No.:** A01634-40**Size:** 40 µg**Synonyms:** RNA polymerase II subunit B1 Antibody, pAb, Rabbit;**Description:**

RNA polymerase II is an integral part of the transcription initiation complex. It possesses a unique C-terminal domain (CTD) consisting of repeats of the consensus heptapeptide sequence YSPTSPS. The CTD domain interacts with a large multisubunit complex that contains TATA-binding protein (TBP). Phosphorylation of RNA polymerase II's largest C-terminal domain (CTD) is a key event during mRNA metabolism.

GenScript **RNA polymerase II CTD repeat Antibody (Phospho-Ser⁵), pAb, Rabbit** is developed in rabbit using a KLH-coupled synthetic phosphopeptide corresponding to the residues surrounding serine 5 of human RNA polymerase II CTD repeat (Swiss Prot: P24928).

Immunogen: a KLH-coupled synthetic phosphopeptide corresponding to the residues surrounding serine 5 of human RNA polymerase II CTD repeat (Swiss Prot: P24928)

Host: Rabbit**Antigen Synonyms:** Human**Conjugation:** Unconjugated**Predicated Band Size:**

217 kD

Observed Band Size:

217 kD

Formulation:

0.5 mg/ml, lyophilized with PBS, pH 7.4, containing 0.02% sodium azide.

Example**Ig Subclass:** IgG

Specificity: GenScript **RNA polymerase II CTD repeat Antibody (Phospho-Ser⁵), pAb, Rabbit** detects endogenous level of human RNA polymerase II CTD repeat protein.

Predicted to react with mouse and rat RNA polymerase II CTD repeat according to sequence homology.

Positive Control: HEK293

Purification: Affinity chromatography using phosphopeptide, and cross-adsorbed with the corresponding non-phosphopeptide

Applications:

Working concentrations for specific applications should be determined by the investigator. The appropriate concentrations may be affected by secondary antibody affinity, antigen concentration, the sensitivity of the method of detection, temperature, the length of the incubations, and other factors. The suitability of this antibody for applications other than those listed below has not been determined. The following concentration ranges are recommended starting points for this product.

Western blot: 1-2 µg/ml**Other Applications:** User optimized

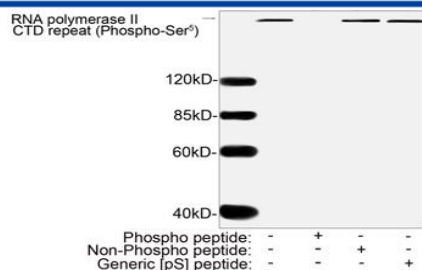
Species Reactivity: Human, Reactivity to other species is not tested yet.

Reconstitution:

Reconstitute the lyophilized powder with deionized water (or equivalent) to an antibody concentration of 0.5 mg/ml.

Storage:

The antibody is stable in lyophilized form if stored at -20°C or below. The reconstituted antibody can be stored for 2-3 weeks at 2-8°C. For long term storage, aliquot and store at -20°C or below. Avoid repeated freezing and thawing cycles.



Western blot analysis of cell lysates using RNA polymerase II CTD repeat Antibody(Phospho-Ser5), pAb, Rabbit (GenScript, A01634, 2 µg/ml) The signal was developed with IRDye™ 800 Conjugated Goat Anti-Rabbit IgG. Predicted Size: 217 kD Observed Size: 217 kD