

**DATASHEET**

Version: 2016-08-17

**alpha 1 Glycine Receptor Antibody, pAb, Rabbit****Cat. No.:** A01636-40**Size:** 40 µg**Synonyms:** GLRA1 Antibody, pAb, Rabbit;**Description:**

The glycine receptor is a neurotransmitter-gated ion channel. Glycine is an important inhibitory transmitter in the brainstem and spinal cord. Binding of glycine to its receptor increases the chloride conductance and thus produces hyperpolarization.

The alpha-1 subunit of the glycine receptor is a ligand-gated chloride channel. This inhibitory glycine receptor mediates postsynaptic inhibition in the spinal cord and other regions of the central nervous system. It is a pentameric receptor composed of alpha and beta subunits. Defects in alpha 1 Glycine Receptor are implicated in the pathophysiology of startle disease (STHE).

GenScript **alpha 1 Glycine Receptor Antibody, pAb, Rabbit** is developed in rabbit using a KLH-coupled synthetic peptide from N-terminal of human alpha 1 Glycine Receptor (Swiss Prot: P23415).

**Immunogen:** KLH-coupled synthetic peptide from N-terminal of human alpha 1 Glycine Receptor (Swiss Prot: P23415)

**Host:** Rabbit**Antigen Synonyms:** Human**Conjugation:** Unconjugated**Predicated Band Size:**

52 KD

**Observed Band Size:**

48 KD

**Formulation:**

0.5 mg/ml, lyophilized with PBS, pH 7.4, containing 0.02%

sodium azide

**Ig Subclass:** Rabbit IgG

**Specificity:** GenScript alpha 1 Glycine Receptor Antibody, pAb, Rabbit detects endogenous levels of mouse alpha 1 Glycine Receptor. It is predicted to react with human alpha 1 Glycine Receptor according to sequence homology.

**Positive Control:** Mouse brain**Purification:** Immunoaffinity chromatography**Applications:**

Working concentrations for specific applications should be determined by the investigator. The appropriate concentrations may be affected by secondary antibody affinity, antigen concentration, the sensitivity of the method of detection, temperature, the length of the incubations, and other factors. The suitability of this antibody for applications other than those listed below has not been determined. The following concentration ranges are recommended starting points for this product.

**Western blot:** 1-2 µg/ml

**Immunohistochemistry:** 5-10 µg/ml **Other Applications:** user optimized

**Species Reactivity:** Mouse. Reactivity to other species is not tested yet.

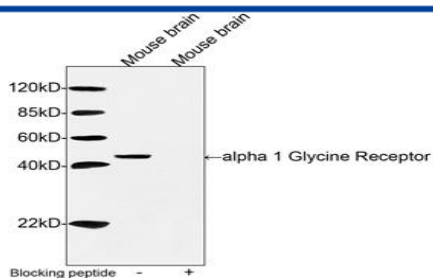
**Reconstitution:**

Reconstitute the lyophilized powder with deionized water (or equivalent) to an antibody concentration of 0.5 mg/ml.

**Storage:**

The antibody is stable in lyophilized form if stored at -20°C or below. The reconstituted antibody can be stored for 2-3 weeks at 2-8°C. For long term storage, aliquot and store at -20°C or below. Avoid repeated freezing and thawing cycles.

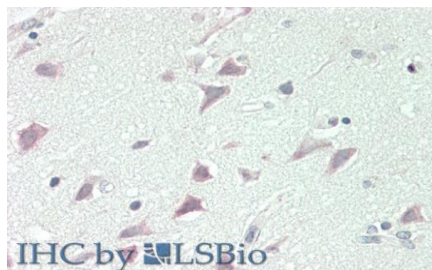
**Example**



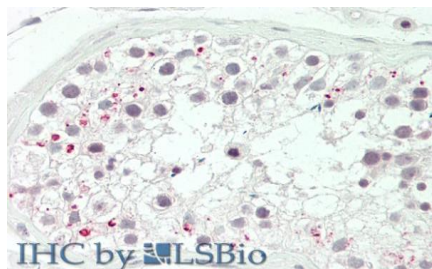
Western blot analysis of tissue lysates using alpha 1 Glycine Receptor Antibody, pAb, Rabbit (GenScript, A01636, 1 µg/ml)  
The signal was developed with IRDye™ 800 Conjugated Goat Anti-Rabbit IgG.

Predicted Size: 52 KD

Observed Size: 48 KD



Immunohistochemistry analysis of human brain, cortex tissue slide (Paraffin embedded) using alpha 1 Glycine Receptor Antibody, pAb, Rabbit (GenScript, Cat.No. A01636, 10 µg/ml)



Immunohistochemistry analysis of human testis tissue slide (Paraffin embedded) using alpha 1 Glycine Receptor Antibody, pAb, Rabbit (GenScript, Cat.No. A01636, 10 µg/ml)